



## Finish

***This presentation reflects the World Rowing Statutes, Rules of Racing and interpretation of them in effect on Jan 1, 2026.  
World Rowing is not responsible for providing updates to this material.***

# Finish tower – examples (1)





# Finish tower – examples (2)



# Finish tower – examples (3)

## Hwacheon (KOR)





# Finish tower – examples (4)



# Humans control electronic equipment





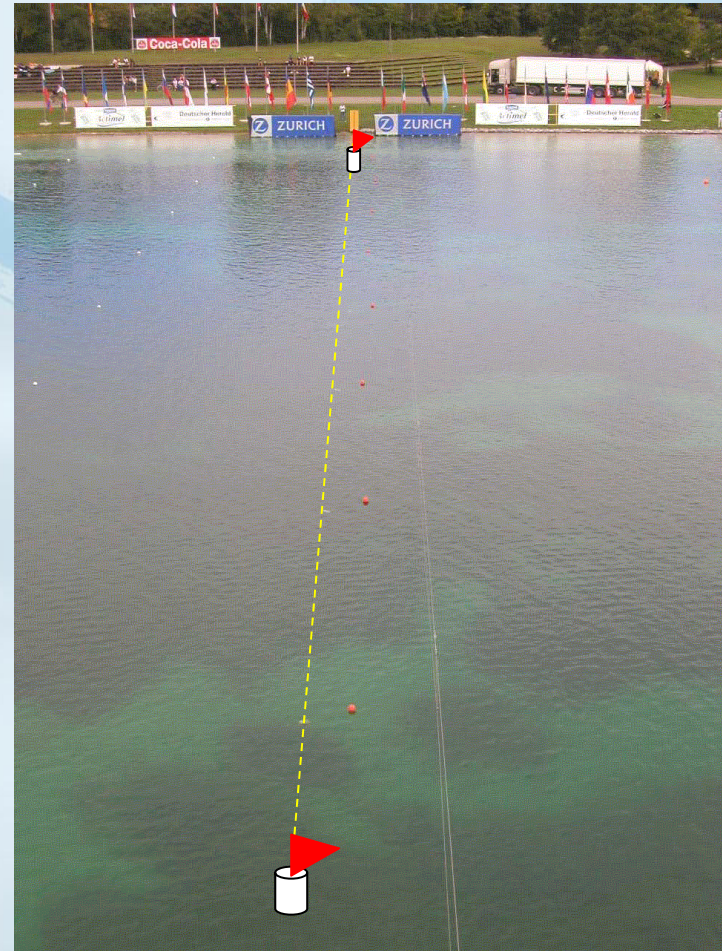
# Technicians and equipment



If ‘technical problem’  
they are in charge!

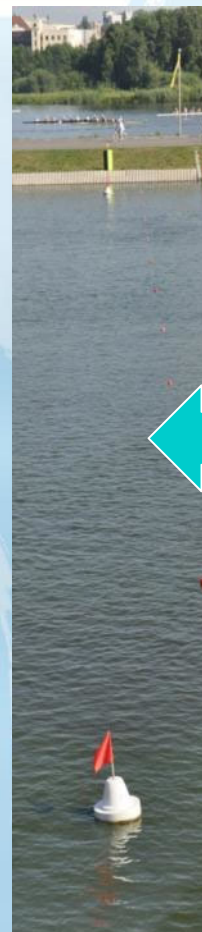


# Finish line



**The finishing line is marked by 2 red flags – no buoys on the line!**





**The finishing line is exactly between yellow and black**

A large, light blue, semi-transparent image of a rowing boat's hull and oars, serving as a background for the central text.

## WORLD CUP WORLD CHAMPIONSHIP OLYMPIC REGATTA



# Number of World Rowing jury members

**2 PEOPLE**

**THE RESPONSIBLE**

**1 JUDGE AT THE FINISH**

# Location

**2 PEOPLE**

**THE RESPONSIBLE** → in front of photo finish/timing screen!  
Also called «Senior Judge at Finish »

**1 JUDGE AT THE FINISH** → on the finish line!



# Location of Responsible Finish



Responsible in front of a screen (with their back to the finish line)

# Location Finish Judge



Finish Judge on the finish line



# Finish Times

At Olympics/Paralympics, World Rowing Championships and World Cup Regatta:

- **ALL FINISH TIMES** shown on the result sheets and the score board must be taken from the photo finish.
- Even if we did not have to use the photo finish to determine the finish order.



OFFICIAL

MANUAL TIMING 1

BACKUP 1

MANUAL TIMING 2

BACKUP 2

PHOTO FINISH 2-1

# Operating at World Rowing events

OFFICIAL

PHOTO-FINISH 1

TIMES AND RANKING ARE OFFICIAL BUT WE MUST WAIT UMPIRE'S DECISION

BACKUP 1

PHOTO-FINISH 2

BACKUP 2

MANUAL TIMING

# Duties of Finish Judges

## Judge at the Finish

- Determine the order of the boats crossing the finish line and announce this verbally to the audience in the finish room;
- Make sure that the umpire validates the race by raising a white flag;
- Indicate to the umpire that the signal was understood by raising a white flag.
- Announce “WHITE FLAG” to people in finish tower

## Responsible at the Finish

- During race: monitor intermediate times and ranking;
- List the names/teams in the correct finish order;
- Check the whole content of the 1st copy of the printed result sheet;
- (Check the results shown on the display board);
- Sign the official edition of the results;
- Declare the result of the race “OFFICIAL”



# Duties of Finish Judges

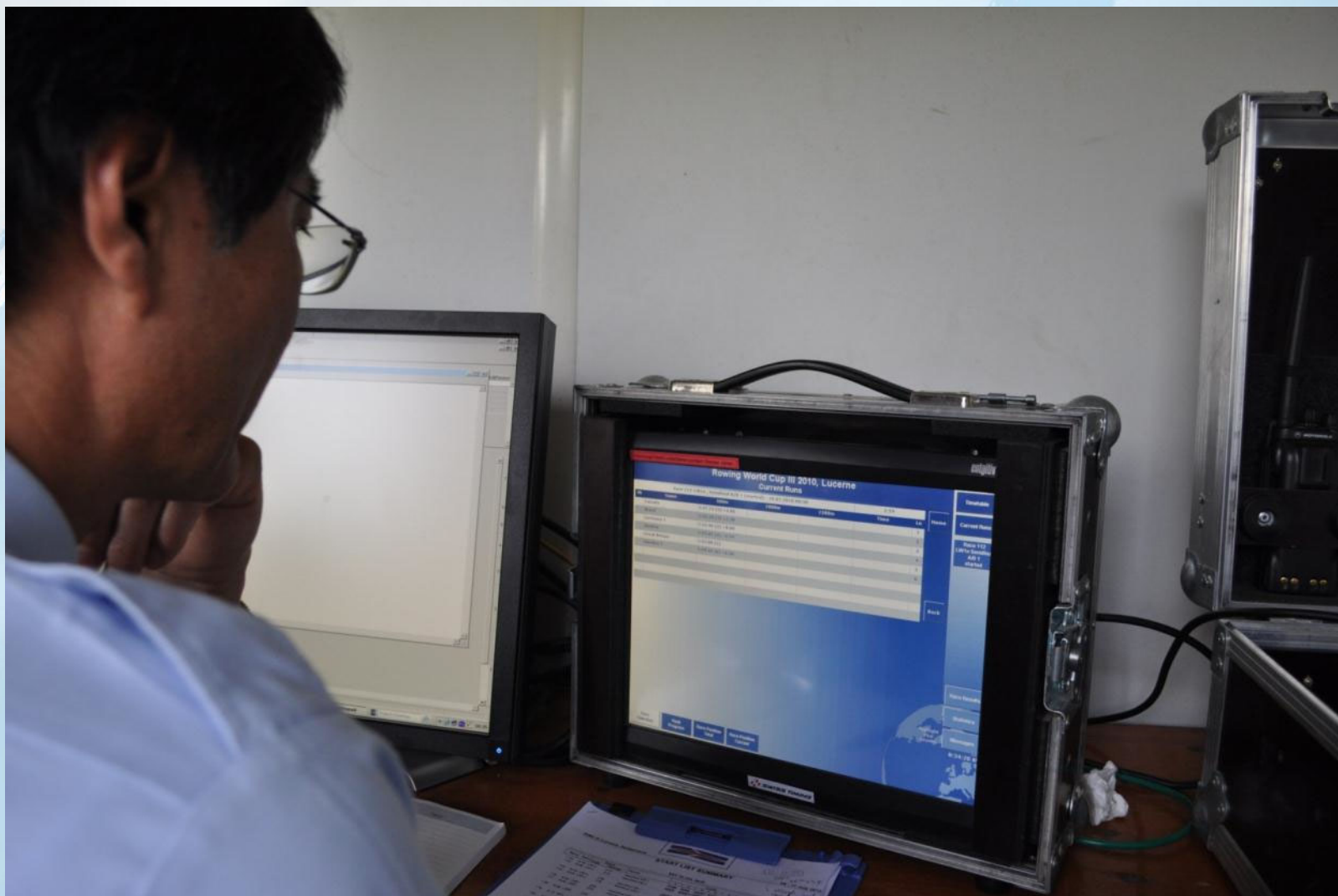
## Judge at the Finish

- Determine the order of the boats crossing the finish line and announce this verbally to the audience in the finish room;
- Make sure that the umpire validates the race by raising a white flag;
- Indicate to the umpire that the signal was understood by raising a white flag.
- Announce "WHITE FLAG" to people in finish tower

## Responsible at the Finish

- **During race: monitor intermediate times and ranking;**
- List the names/teams in the correct finish order;
- Check the whole content of the 1st copy of the printed result sheet;
- (Check the results shown on the display board);
- Sign the official edition of the results;
- Declare the result of the race "OFFICIAL"

# Responsible checks split times



# Responsible checks split times

Achtung! Nicht runterfahren, sondern Stecker ziehen.

**Rowing World Cup III 2010, Lucerne**  
**Current Runs**

Race 112: LW1x, Semifinal A/B 1 (started) - 10.07.2010 08:30

Rk	Name	500m	1000m	1500m	Time	Ln
	Canada	1:57.74 (5) +4.86				1
	Brazil	1:55.26 (3) +2.38				2
	Germany 1	1:52.96 (2) +0.08				3
	Austria	1:55.02 (4) +2.94				4
	Great Britain	1:52.88 (1)				5
	Sweden 2	1:59.46 (6) +6.58				

2 races on the course

1 race on the course

**Rowing World Cup III 2010, Lucerne**  
**Current Runs**

Race 112: LW1x, Semifinal A/B 1 (started) - 10.07.2010 08:30

Rk	Name	500m	1000m	1500m	Time	Ln
	Canada	1:57.74 (5) +4.86	3:58.40 (5) +7.27			1
	Brazil	1:55.26 (3) +2.38	3:52.55 (3) +1.42			2
	Germany 1	1:52.96 (2) +0.08	3:51.70 (2) +0.57			3
	Austria	1:55.02 (4) +2.94	3:56.02 (4) +4.89			4
	Great Britain	1:52.88 (1)	3:51.13 (1)			5
	Sweden 2	1:59.46 (6) +6.58	4:04.36 (6) +13.23			6

Home Current Race 1 LW1x Sem A/B 1 started Race 1 LW1x Sem A/B 2 started

Back

Race 113: LW1x, Semifinal A/B 2 (started) - 10.07.2010 08:36

Rk	Name	500m	1000m	1500m	Time	Ln
	Netherlands				0:18	1
	Sweden 1					2
	Greece					3
	Italy					4
	Japan 2					5
	Ireland					6

Race Overview Rank Progress Race Position Total Race Position

Race Result Statistics Messages Highlight your country




# Duties of Finish Judges

## Judge at the Finish

- Determine the order of the boats crossing the finish line and announce this verbally to the audience in the finish room;
- Make sure that the umpire validates the race by raising a white flag;
- Indicate to the umpire that the signal was understood by raising a white flag.
- Announce “WHITE FLAG” to people in finish tower

## Responsible at the Finish

- During race: monitor intermediate times and ranking;
- List the names/teams in the correct finish order;
- Check the whole content of the 1st copy of the printed result sheet;
- (Check the results shown on the display board);
- Sign the official edition of the results;
- Declare the result of the race “OFFICIAL”



Judge at finish:  
5 – 4 – 1 – 3 – 6 – 2

BOW NUMBERS  
Not  
Lane Numbers



# Duties of Finish Judges

## Judge at the Finish

- Determine the order of the boats crossing the finish line and announce this verbally to the audience in the finish room;
- **Make sure that the umpire validates the race by raising a white flag;**
- Indicate to the umpire that the signal was understood by raising a white flag.
- Announce "WHITE FLAG" to people in finish tower

## Responsible at the Finish

- During race: monitor intermediate times and ranking;
- List the names/teams in the correct finish order;
- Check the whole content of the 1st copy of the printed result sheet;
- (Check the results shown on the display board);
- Sign the official edition of the results;
- Declare the result of the race "OFFICIAL"

# Umpire validates race (1)



First flag towards crews



## Umpire validates race (2)



Secondly flag towards finish tower

# Duties of Finish Judges

## Judge at the Finish

- Determine the order of the boats crossing the finish line and announce this verbally to the audience in the finish room;
- Make sure that the umpire validates the race by raising a white flag;
- **Indicate to the umpire that the signal was understood by raising a white flag.**
- **Announce "WHITE FLAG" to people in finish tower**

## Responsible at the Finish

- During race: monitor intermediate times and ranking;
- List the names/teams in the correct finish order;
- Check the whole content of the 1st copy of the printed result sheet;
- (Check the results shown on the display board);
- Sign the official edition of the results;
- Declare the result of the race "OFFICIAL"



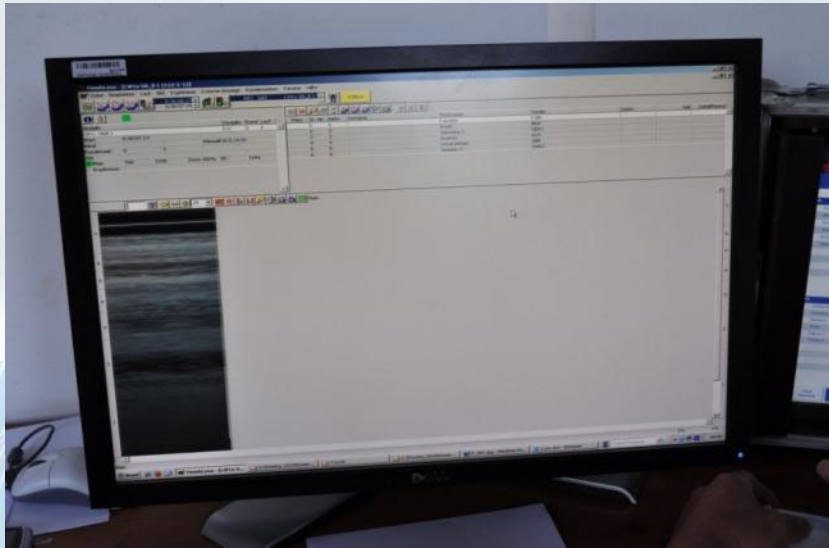
# Finish judge replies



Clear and immediate

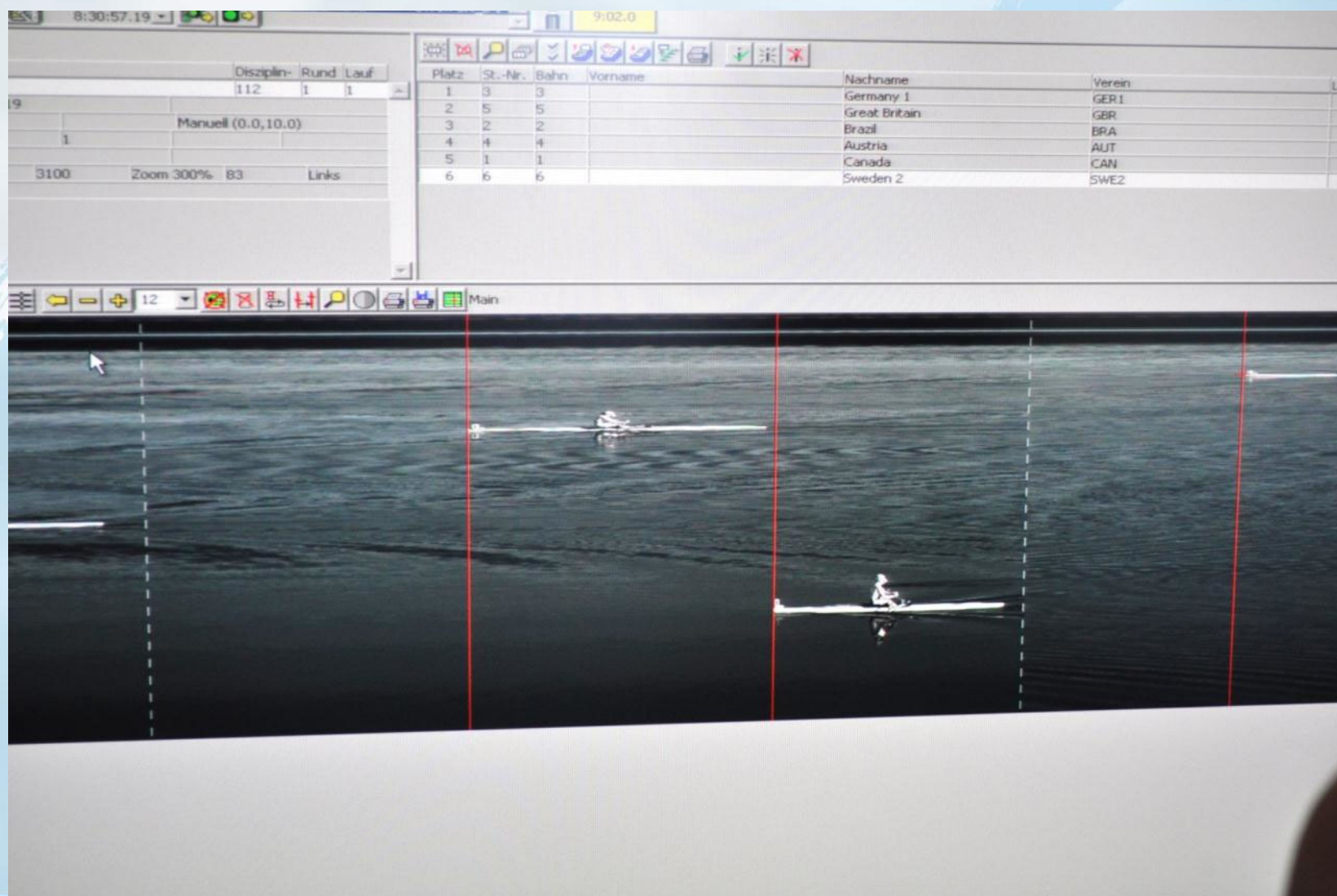


# Photo finish develops



As soon the crews are crossing the finish line, the photo finish starts to develop and the operator starts to work

# The whole sequence...



# Before continuing...

- What is a photo finish?
- How does this work?
- How do interpret the image(s)?



# Where is the finish line?

08 12:20:22

Poznan\_2008 - M4- H2 (23-1-2)

Ziel - Main

Start: 20.06.2008 12:12:01.60



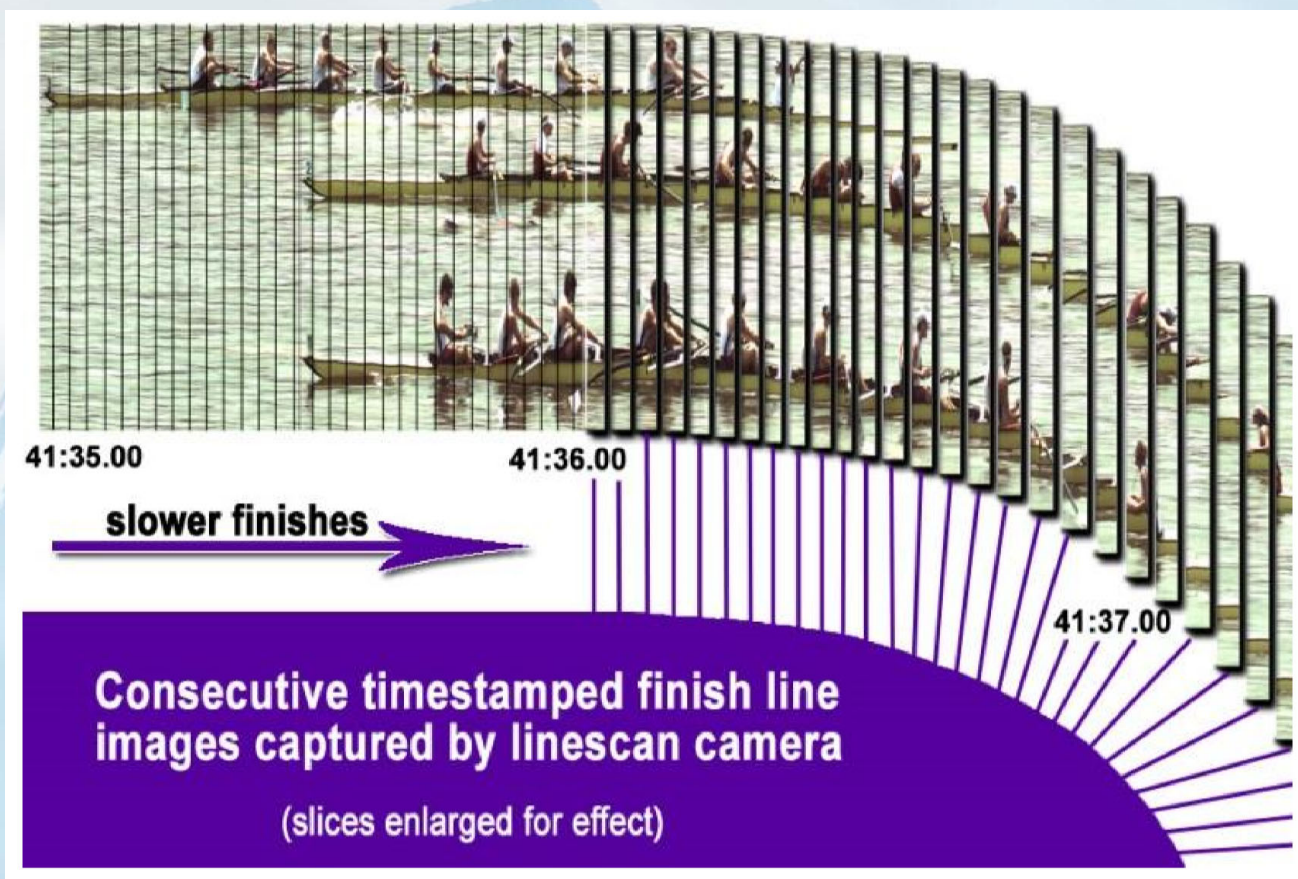
# Photo finish principles

- Contrary to a normal camera, the lens is not circular;
- Indeed, the camera has a very thin linear lens;
- The camera continuously takes a number pictures per time unit from the same location;
- The time unit is minimum 1/100 sec;
- That location is the (thin) finish line;
- Those thin pictures are added one after another;
- The result is a 'picture' of the finish line at different moments.

Note: The timing is linked to and activated by the start system



# View on the finish line at ... moments ...



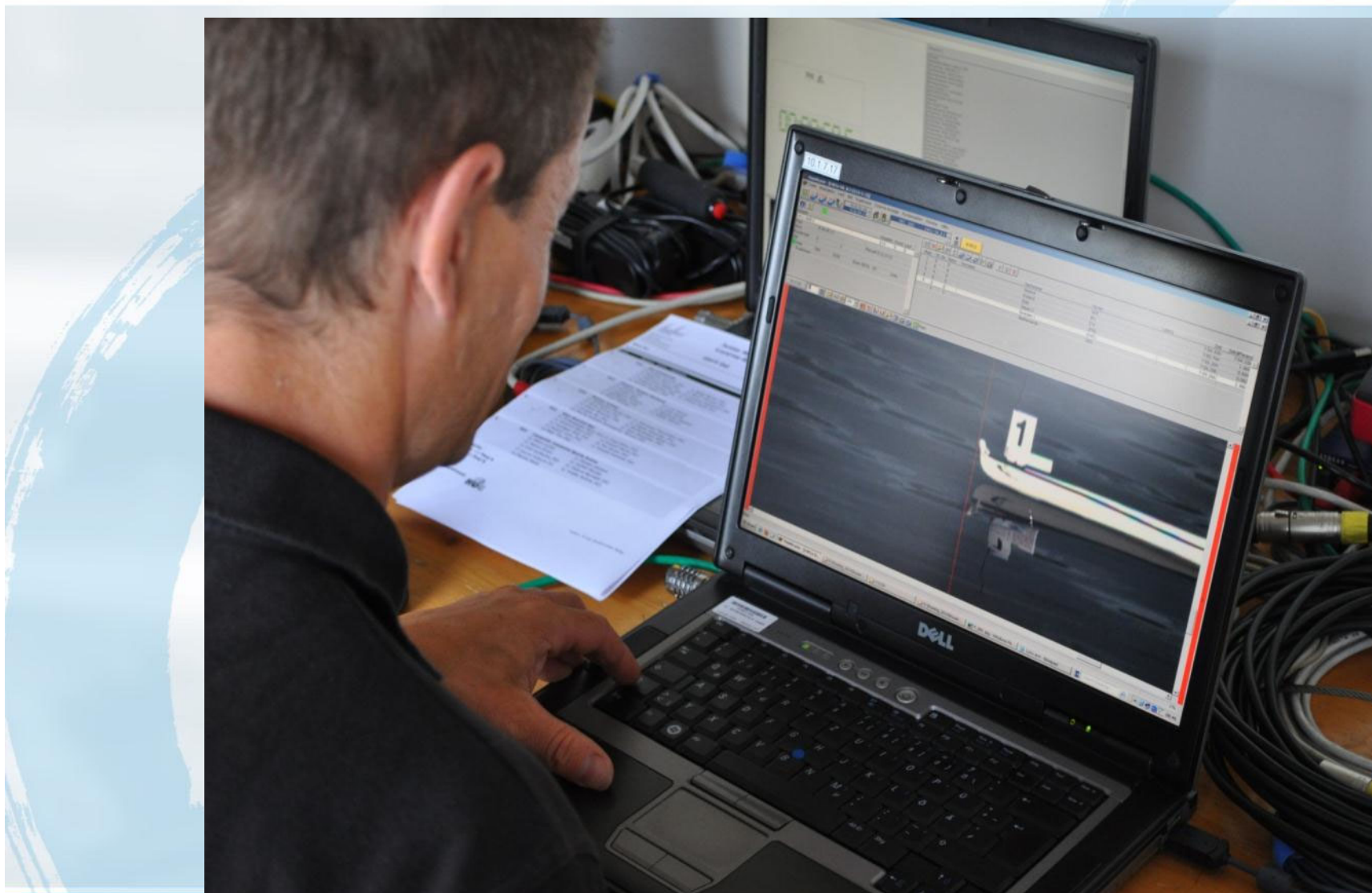
- ☐ Each part of the photo finish represents what occurred on the finishing line at one precise time (or part of a second).
- ☐ It is possible to go to 1000 parts in a second (= 1/1000 sec) or more.
- ☐ However, the minimum precision required is **1/100 sec.**



# Up to 1/10.000 sec

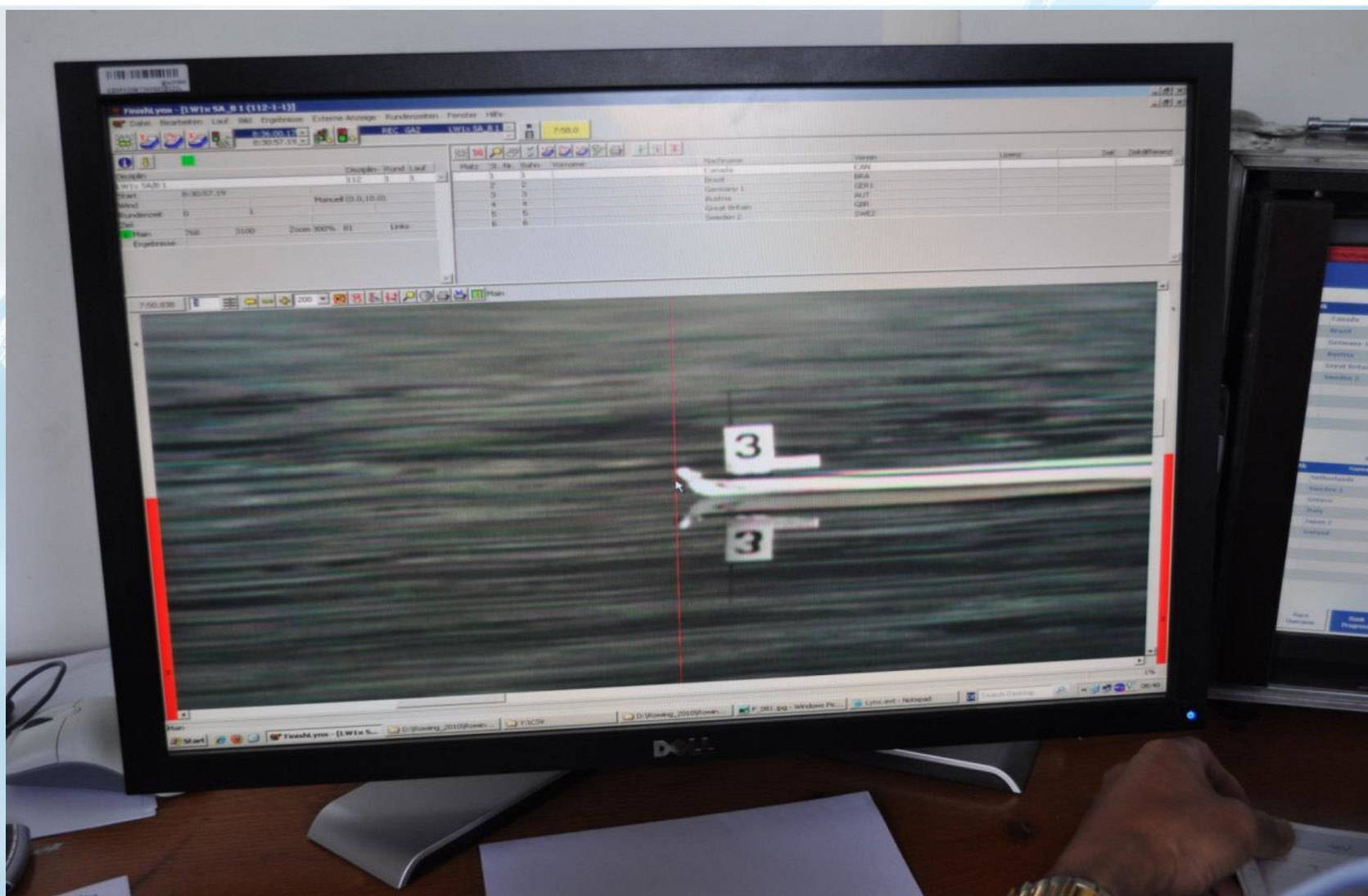


# Let's come back to the operator's work...



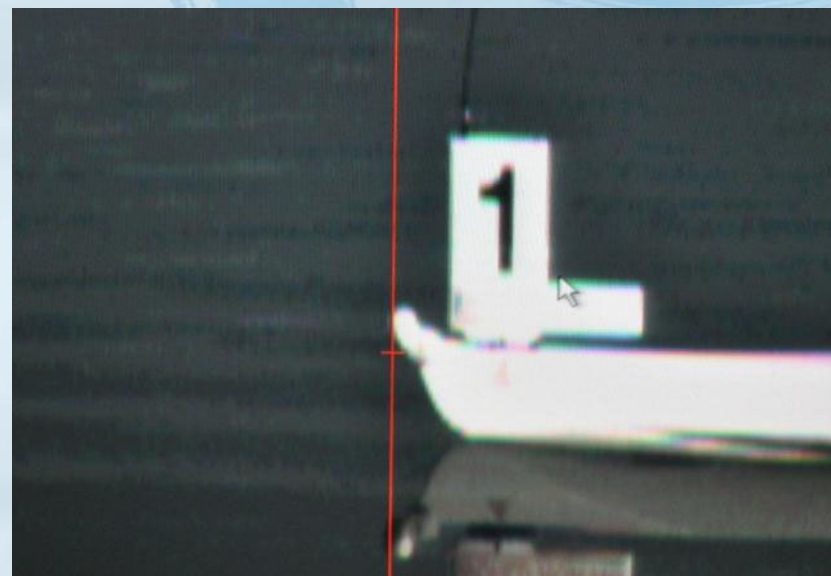
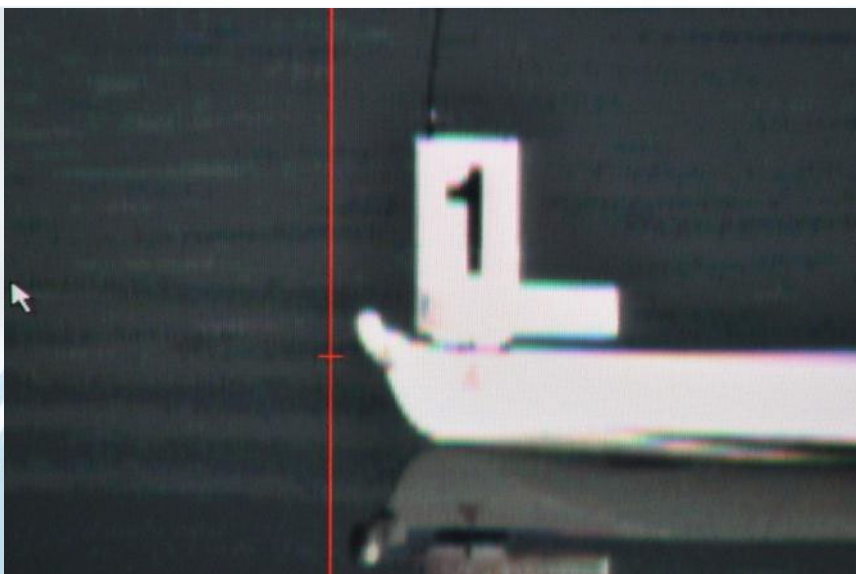


# As seen and controlled by Responsible at the Finish





# a. Cursor exactly at bow ball

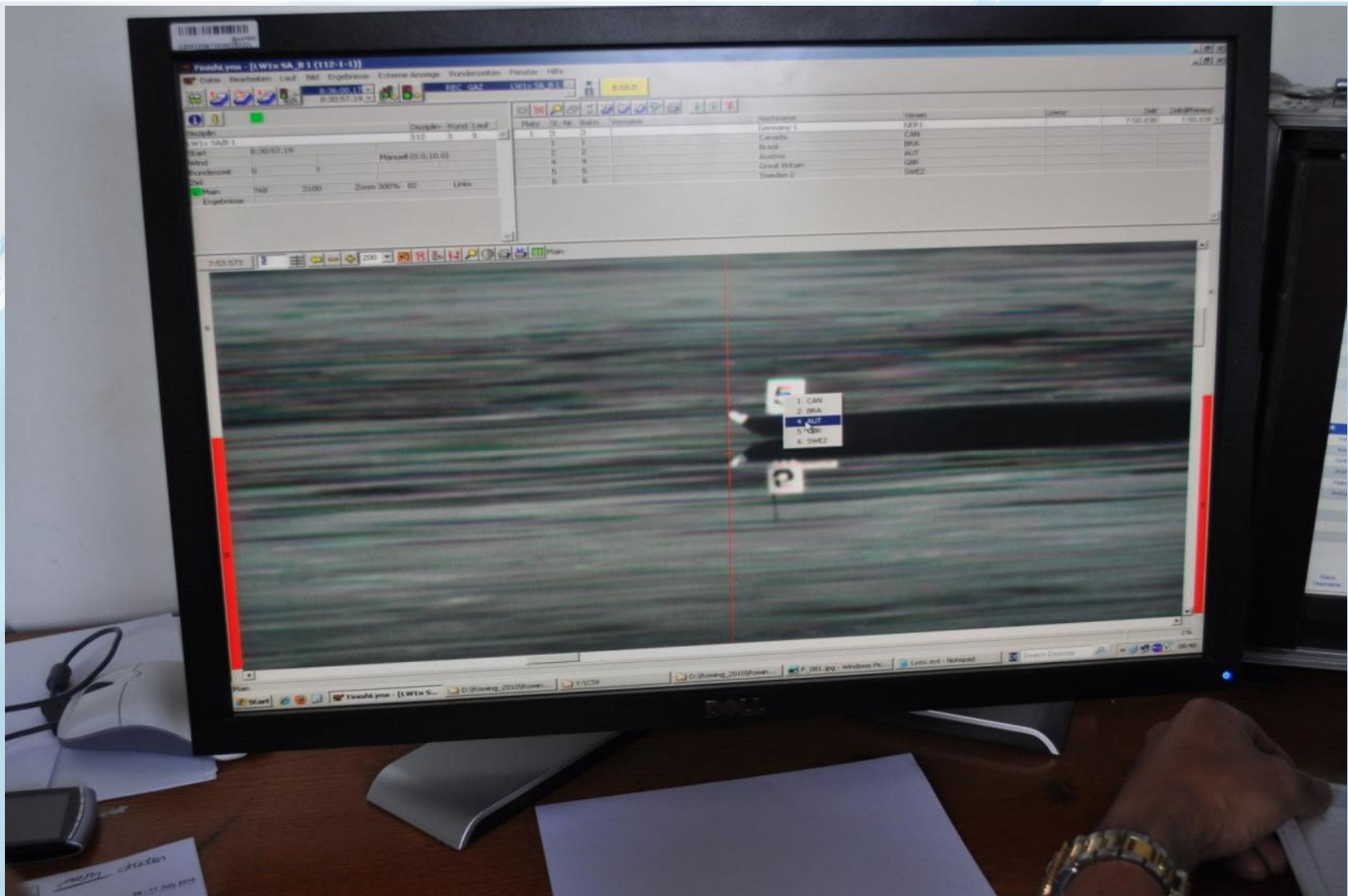


# a. Cursor exactly at bow ball



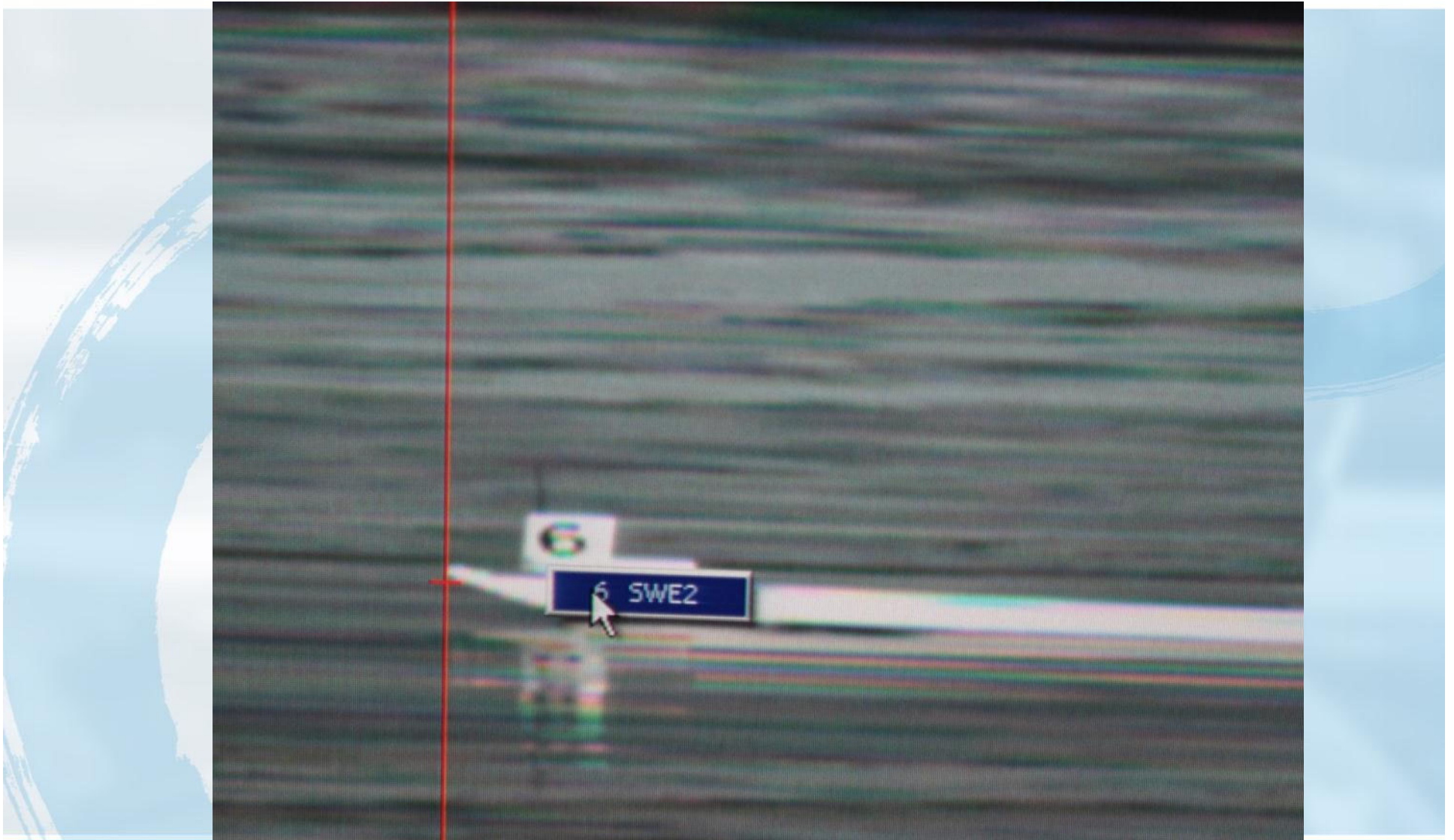
Done for all crews

## b. Matching crew name to each time (or cursor line)





# End of 'matching'



# Matching=finish time per crew

!!!Achtung!!!Nicht runterfahren,sondern Stecker ziehen.

**Rowing World Cup III 2010, Lucerne**  
**Current Runs**

Race 112: LW1x , Semifinal A/B 1 (started) - 10.07.2010 08:30

Rk	Name	500m	1000m	1500m	Time	Ln
	Canada	1:57.74 (5) +4.86	3:58.40 (5) +7.27	6:00.87 (5) +9.38		1
3	Brazil	1:55.26 (3) +2.38	3:52.55 (3) +1.42	5:51.49 (1)	7:54.63 (3) +3.80	2
1	Germany 1	1:52.96 (2) +0.08	3:51.70 (2) +0.57	5:51.62 (2) +0.13	7:50.83 (1)	3
	Austria	1:55.82 (4) +2.94	3:56.02 (4) +4.89	5:58.63 (4) +7.14		4
2	Great Britain	1:52.88 (1)	3:51.13 (1)	5:51.67 (3) +0.18	7:53.57 (2) +2.74	5
	Sweden 2	1:59.46 (6) +6.58	4:04.36 (6) +13.23	6:10.65 (6) +19.16		6

Home

Back

The finish time of each crew appears on the screen of the Responsible at the Finish



## Rowing World Cup III 2010, Lucerne

Race 112: LW1x , Semifinal A/B 1 (started) - 10.07.2010 08:30

8:28

Rk	Name	500m	1000m	1500m	Time	Ln
	Canada	1:57.74 (5) +4.86	3:58.40 (5) +7.27	6:00.87 (5) +9.38		1
3	Brazil	1:55.26 (3) +2.38	3:52.55 (3) +1.42	5:51.49 (1)	7:54.63 (3) +3.80	2
1	Germany 1	1:52.96 (2) +0.08	3:51.70 (2) +0.57	5:51.62 (2) +0.13	7:50.83 (1)	3
	Austria	1:55.82 (4) +2.94	3:56.02 (4) +4.89	5:58.63 (4) +7.14		4
2	Great Britain	1:52.88 (1)	3:51.13 (1)	5:51.67 (3) +0.18	7:53.57 (2) +2.74	5
	Sweden 2	1:59.46 (6) +6.58	4:04.36 (6) +13.23	6:10.65 (6) +19.16		6

[Home](#)

[Back](#)

When ‘linking’ each bow, the finish time of each crew appears on the screen of the Responsible at the Finish



# Duties of Finish Judges

## Judge at the Finish

- Determine the order of the boats crossing the finish line and announce this verbally to the audience in the finish room;
- Make sure that the umpire validates the race by raising a white flag;
- Indicate to the umpire that the signal was understood by raising a white flag.
- Announce “WHITE FLAG” to people in finish tower

## Responsible at the Finish

- During race: monitor intermediate times and ranking;
- List the names/teams in the correct finish order;
- **Check the whole content of the 1st copy of the printed result sheet;**
- (Check the results shown on the display board);
- Sign the official edition of the results;
- Declare the result of the race “OFFICIAL”



The Responsible will be presented a result sheet and will start to check the **full** content

# Checking a result sheet

8		Results										M1x	
(Event)		Men's Single Sculls										H1	
		MON 22 SEP 2025										Race 34	
World Best:		NZL	MANSON Robert				Poznan (POL) 2017		World Cup		6:30.74		
World Champ' Best:		NZL	DRYSDALE Mahe				Poznan (POL) 2009		World Championships		6:33.35		
World Champion:		GER	ZEIDLER Oliver				Belgrade (SRB) 2023		World Championships		6:38.08		
Rank	Lane	Ctry Code	Name	500m		1000m		1500m		2000m		Prog. Code	
1	2	NED	van DORP Simon	1:37.58	(1)	3:18.47	(1)	4:58.72	(1)	6:43.03		Q	
						1:40.89	(1)	1:40.25	(1)	1:44.31	(3)		
2	6	GRE	NTOUSKOS Stefanos	1:37.98	(2)	3:20.01	(2)	5:02.22	(2)	6:45.09		Q	
						1:42.03	(2)	1:42.21	(2)	1:42.87	(2)		
				0.40		1.54		3.50		2.06			
3	5	DEN	SECHER Bastian	1:40.64	(3)	3:25.47	(3)	5:08.08	(3)	6:48.35		TBC	
						1:44.83	(4)	1:42.61	(3)	1:40.27	(1)		
				3.06		7.00		9.36		5.32			
4	3	POL	LITKA Cezary	1:41.79	(4)	3:26.24	(4)	5:12.95	(4)	6:59.13		TBC	
						1:44.45	(3)	1:46.71	(5)	1:46.18	(5)		
				4.21		7.77		14.23		16.10			
5	4	TUN	BEN HAMMOUDA Fedi	1:44.19	(5)	3:31.72	(5)	5:17.68	(5)	7:02.60		TBC	
						1:47.53	(5)	1:45.96	(4)	1:44.92	(4)		
				6.61		13.25		18.96		19.57			
6	1	SUD	AHMED Abdalla	1:45.73	(6)	3:35.58	(6)	5:27.76	(6)	7:16.55		TBC	
						1:49.85	(6)	1:52.18	(6)	1:48.79	(6)		
				8.15		17.11		29.04		33.52			



# Result sheet : checking 1 – bow numbers order

## 8 (Event) Results M1x H1 Race 34 MON 22 SEP 2025

World Best:	<b>NZL</b>	MANSON Robert	Poznan (POL) 2017	World Cup	<b>6:30.74</b>
World Champ' Best:	<b>NZL</b>	DRYSDALE Mahe	Poznan (POL) 2009	World Championships	<b>6:33.35</b>
World Champion:	<b>GER</b>	ZEIDLER Oliver	Belgrade (SRB) 2023	World Championships	<b>6:38.08</b>

Rank	Lane	Ctry Code	Name	500m	1000m	1500m	2000m	Prog. Code
1	2	NED	van DORP Simon	1:37.58 (1)	3:18.47 (1) 1:40.89 (1)	4:58.72 (1) 1:40.25 (1)	6:43.03 (3) 1:44.31 (3)	Q
2	6	CRO	NTOUSKOS Stefanos	1:37.98 (2) 0.40	3:20.01 (2) 1:42.03 (2) 1.54	5:02.22 (2) 1:42.21 (2) 3.50	6:45.09 (2) 1:42.87 (2) 2.06	Q
3	5	DEN	SECHER Bastian	1:40.64 (3) 3.06	3:25.47 (3) 1:44.83 (4) 7.00	5:08.08 (3) 1:42.61 (3) 9.36	6:48.35 (1) 1:40.27 (1) 5.32	TBC
4	3	POL	LITKA Cezary	1:41.79 (4) 4.21	3:26.24 (4) 1:44.45 (3) 7.77	5:12.95 (4) 1:46.71 (5) 14.23	6:59.13 (5) 1:46.18 (5) 16.10	TBC
5	4	TUN	BEN HAMMOUDA Fedi	1:44.19 (5) 6.61	3:31.72 (5) 1:47.53 (5) 13.25	5:17.68 (5) 1:45.96 (4) 18.96	7:02.60 (4) 1:44.92 (4) 19.57	TBC
6	1	SUD	AHMED Abdalla	1:45.73 (6) 8.15	3:35.58 (6) 1:49.85 (6) 17.11	5:27.76 (6) 1:52.18 (6) 29.04	7:16.55 (6) 1:48.79 (6) 33.52	TBC

## Result sheet : checking 2 - nations

8 (Event)		Results Men's Single Sculls MON 22 SEP 2025										M1x H1 Race 34	
World Best:		NZL	MANSON Robert				Poznan (POL) 2017			World Cup		6:30.74	
World Champ' Best:		NZL	DRYSDALE Mahe				Poznan (POL) 2009			World Championships		6:33.35	
World Champion:		GER	ZEIDLER Oliver				Belgrade (SRB) 2023			World Championships		6:38.08	
Rank	Lane	Ctry Code	Name	500m		1000m		1500m		2000m		Prog. Code	
1	2	NED	van DORP Simon	1:37.58	(1)	3:18.47	(1)	4:58.72	(1)	6:43.03		Q	
						1:40.89	(1)	1:40.25	(1)	1:44.31	(3)		
2	6	GRE	NTOUSKOS Stefanos	1:37.98	(2)	3:20.01	(2)	5:02.22	(2)	6:45.09		Q	
						1:42.03	(2)	1:42.21	(2)	1:42.87	(2)		
				0.40		1.54		3.50		2.06			
3	5	DEN	SECHER Bastian	1:40.64	(3)	3:25.47	(3)	5:08.08	(3)	6:48.35		TBC	
						1:44.83	(4)	1:42.61	(3)	1:40.27	(1)		
				3.06		7.00		9.36		5.32			
4	3	POL	LITKA Cezary	1:41.79	(4)	3:26.24	(4)	5:12.95	(4)	6:59.13		TBC	
						1:44.45	(3)	1:46.71	(5)	1:46.18	(5)		
				4.21		7.77		14.23		16.10			
5	4	TUN	BEN HAMMOUDA Fedi	1:44.19	(5)	3:31.72	(5)	5:17.68	(5)	7:02.60		TBC	
						1:47.53	(5)	1:45.96	(4)	1:44.92	(4)		
				6.61		13.25		18.96		19.57			
6	1	SUD	AHMED Abdalla	1:45.73	(6)	3:35.58	(6)	5:27.76	(6)	7:16.55		TBC	
						1:49.85	(6)	1:52.18	(6)	1:48.79	(6)		
				8.15		17.11		29.04		33.52			

# Result sheet : checking 3 - finish times

8		Results										M1x	
(Event)		Men's Single Sculls										H1	
		MON 22 SEP 2025										Race 34	
World Best:		NZL	MANSON Robert				Poznan (POL) 2017			World Cup		6:30.74	
World Champ' Best:		NZL	DRYSDALE Mahe				Poznan (POL) 2009			World Championships		6:33.35	
World Champion:		GER	ZEIDLER Oliver				Belgrade (SRB) 2023			World Championships		6:38.08	
Rank	Lane	Ctry Code	Name	500m		1000m		1500m		2000m		Prog. Code	
1	2	NED	van DORP Simon	1:37.58	(1)	3:18.47	(1)	4:58.72	(1)	6:43.03		Q	
						1:40.89	(1)	1:40.25	(1)	1:44.31	(3)		
2	6	GRE	NTOUSKOS Stefanos	1:37.98	(2)	3:20.01	(2)	5:02.22	(2)	6:45.09		Q	
						1:42.03	(2)	1:42.21	(2)	1:42.87	(2)		
				0.40		1.54		3.50		2.06			
3	5	DEN	SECHER Bastian	1:40.64	(3)	3:25.47	(3)	5:08.08	(3)	6:48.35		TBC	
						1:44.83	(4)	1:42.61	(3)	1:40.27	(1)		
				3.06		7.00		9.36		5.32			
4	3	POL	LITKA Cezary	1:41.79	(4)	3:26.24	(4)	5:12.95	(4)	6:59.13		TBC	
						1:44.45	(3)	1:46.71	(5)	1:46.18	(5)		
				4.21		7.77		14.23		16.10			
5	4	TUN	BEN HAMMOUDA Fedi	1:44.19	(5)	3:31.72	(5)	5:17.68	(5)	7:02.60		TBC	
						1:47.53	(5)	1:45.96	(4)	1:44.92	(4)		
				6.61		13.25		18.96		19.57			
6	1	SUD	AHMED Abdalla	1:45.73	(6)	3:35.58	(6)	5:27.76	(6)	7:16.55		TBC	
						1:49.85	(6)	1:52.18	(6)	1:48.79	(6)		
				8.15		17.11		29.04		33.52			



# Result sheet : checking 4 - logic of intermediate times

8		Results								M1x	
(Event)		Men's Single Sculls								H1	
		MON 22 SEP 2025								Race 34	
World Best:		NZL	MANSON Robert		Poznan (POL) 2017		World Cup		6:30.74		
World Champ' Best:		NZL	DRYSDALE Mahe		Poznan (POL) 2009		World Championships		6:33.35		
World Champion:		GER	ZEIDLER Oliver		Belgrade (SRB) 2023		World Championships		6:38.08		
Rank	Lane	Ctry Code	Name	500m		1000m		1500m		2000m	Prog. Code
1	2	NED	van DORP Simon	1:37.58	(1)	3:18.47	(1)	4:58.72	(1)	6:43.03	Q
						1:40.89	(1)	1:40.25	(1)	1:44.31 (3)	
2	6	GRE	NTOUSKOS Stefanos	1:37.98	(2)	3:20.01	(2)	5:02.22	(2)	6:45.09	Q
						1:42.03	(2)	1:42.21	(2)	1:42.87 (2)	
				0.40		1.54		3.50		2.06	
3	5	DEN	SECHER Bastian	1:40.64	(3)	3:25.47	(3)	5:08.08	(3)	6:48.35	TBC
						1:44.83	(4)	1:42.61	(3)	1:40.27 (1)	
				3.06		7.00		9.36		5.32	
4	3	POL	LITKA Cezary	1:41.79	(4)	3:26.24	(4)	5:12.95	(4)	6:59.13	TBC
						1:44.45	(3)	1:46.71	(5)	1:46.18 (5)	
				4.21		7.77		14.23		16.10	
5	4	TUN	BEN HAMMOUDA Fedi	1:44.19	(5)	3:31.72	(5)	5:17.68	(5)	7:02.60	TBC
						1:47.53	(5)	1:45.96	(4)	1:44.92 (4)	
				6.61		13.25		18.96		19.57	
6	1	SUD	AHMED Abdalla	1:45.73	(6)	3:35.58	(6)	5:27.76	(6)	7:16.56	TBC
						1:49.85	(6)	1:52.18	(6)	1:49.79 (6)	
				8.15		17.11		29.04		33.52	

## Result sheet : checking 5 - progression system

8 (Event)		Results Men's Single Sculls MON 22 SEP 2025										M1x H1 Race 34	
World Best:		NZL	MANSON Robert				Poznan (POL) 2017		World Cup		6:30.74		
World Champ' Best:		NZL	DRYSDALE Mahe				Poznan (POL) 2009		World Championships		6:33.35		
World Champion:		GER	ZEIDLER Oliver				Belgrade (SRB) 2023		World Championships		6:38.08		
Rank	Lane	Ctry Code	Name	500m		1000m		1500m		2000m		Prog Code	
1	2	NED	van DORP Simon	1:37.58	(1)	3:18.47	(1)	4:58.72	(1)	6:43.03		Q	
						1:40.89	(1)	1:40.25	(1)	1:44.31	(3)		
2	6	GRE	NTOUSKOS Stefanos	1:37.98	(2)	3:20.01	(2)	5:02.22	(2)	6:45.09		Q	
						1:42.03	(2)	1:42.21	(2)	1:42.87	(2)		
				0.40		1.54		3.50		2.06			
3	5	DEN	SECHER Bastian	1:40.64	(3)	3:25.47	(3)	5:08.08	(3)	6:48.35		TBC	
						1:44.83	(4)	1:42.61	(3)	1:40.27	(1)		
				3.06		7.00		9.36		5.32			
4	3	POL	LITKA Cezary	1:41.79	(4)	3:26.24	(4)	5:12.95	(4)	6:59.13		TBC	
						1:44.45	(3)	1:46.71	(5)	1:46.18	(5)		
				4.21		7.77		14.23		16.10			
5	4	TUN	BEN HAMMOUDA Fedi	1:44.19	(5)	3:31.72	(5)	5:17.68	(5)	7:02.60		TBC	
						1:47.53	(5)	1:45.96	(4)	1:44.92	(4)		
				6.61		13.25		18.96		19.57			
6	1	SUD	AHMED Abdalla	1:45.73	(6)	3:35.58	(6)	5:27.76	(6)	7:16.55		TBC	
						1:49.85	(6)	1:52.18	(6)	1:48.79	(6)		
				8.15		17.11		29.04		33.52			

Which crews progress on times is not known until all heats are complete

## Result sheet : checking 5 - progression system

8 (Event)		Results Men's Single Sculls MON 22 SEP 2025										M1x H5 Race 38	
World Best:		NZL	MANSON Robert				Poznan (POL) 2017		World Cup		6:30.74		
World Champ' Best:		NZL	DRYSDALE Mahe				Poznan (POL) 2009		World Championships		6:33.35		
World Champion:		GER	ZEIDLER Oliver				Belgrade (SRB) 2023		World Championships		6:38.08		
Rank	Lane	Ctry Code	Name	500m		1000m		1500m		2000m		Prog. Code	
1	6	CHN	HAN Wei	1:40.91	(2)	3:25.10	(1)	5:10.27	(1)	6:51.40		Q	
				0.38		1:44.19	(1)	1:45.17	(2)	1:41.13	(2)		
2	3	NZL	ULLRICH Logan	1:41.00	(3)	3:27.03	(2)	5:12.02	(2)	6:52.95		Q	
				0.47		1:46.03	(2)	1:44.99	(1)	1:40.93	(1)		
						1.93		1.75		1.55			
3	5	GBR	BARRAS Thomas	1:41.72	(4)	3:27.89	(4)	5:13.32	(4)	6:54.66		Q	
				1.19		1:46.17	(3)	1:45.43	(3)	1:41.34	(3)		
						2.79		3.05		3.26			
4	1	SUI	LANGE Maurin	1:40.53	(1)	3:27.32	(3)	5:13.08	(3)	6:55.58		Q	
						1:46.79	(5)	1:45.76	(4)	1:42.50	(5)		
						2.22		2.81		4.18			
5	2	SLO	PFEIFER Filip-Matej	1:42.88	(5)	3:29.35	(5)	5:16.90	(5)	6:58.35		Q	
				2.35		1:46.47	(4)	1:47.55	(5)	1:41.45	(4)		
						1.25		6.62		6.95			
6	4	IRQ	AL-DULAIMI Bakr	1:43.27	(6)	3:30.91	(6)	5:20.15	(6)	7:09.92		FE	
				2.74		1:47.64	(6)	1:49.24	(6)	1:49.77	(6)		
						5.81		9.88		18.52			



# Duties of Finish Judges

## Judge at the Finish

- Determine the order of the boats crossing the finish line and announce this verbally to the audience in the finish room;
- Make sure that the umpire validates the race by raising a white flag;
- Indicate to the umpire that the signal was understood by raising a white flag.
- Announce "WHITE FLAG" to people in finish tower

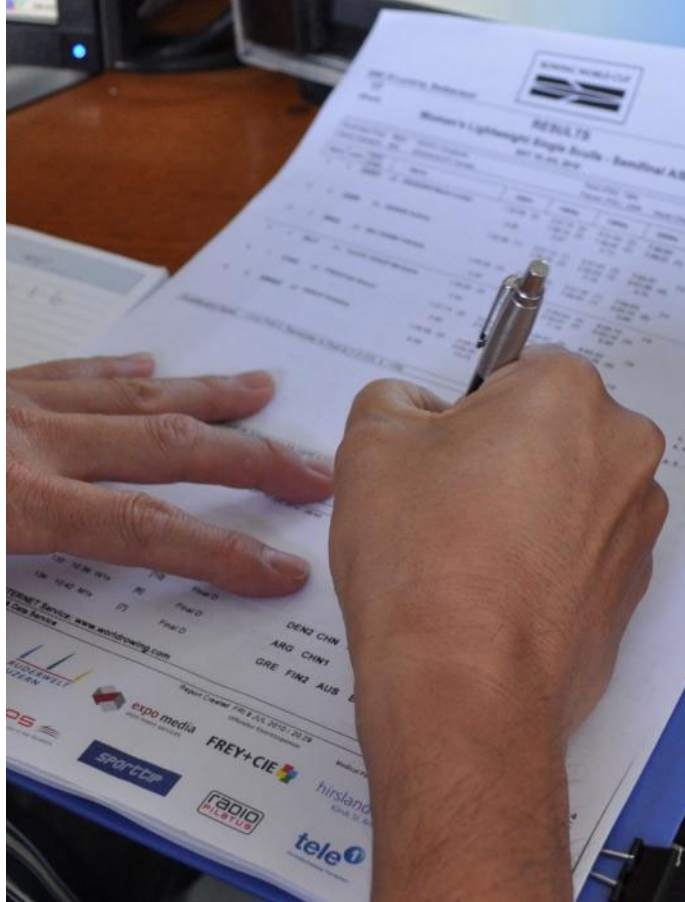
## Responsible at the Finish

- During race: monitor intermediate times and ranking;
- List the names/teams in the correct finish order;
- Check the whole content of the 1st copy of the printed result sheet;
- (Check the results shown on the display board);
- **Sign the official edition of the results;**
- **Declare the result of the race "OFFICIAL"**

Qualifier: 1-3->FA, 4...>FB

Rank	Name	500m	1000m	1500m	Time	Ln
(2)	Summerville 1	1:52.96 +8.88	(2) 3:51.79 +8.17	(2) 5:51.62 +8.13	(1) 7:50.83	3
(1)	David Williams	1:52.88	(1) 3:51.11	(3) 5:51.87 +8.18	(2) 7:53.57 +2.74	5
(3)	David	1:53.26 +9.26	(3) 3:52.55 +1.42	(1) 5:51.49	(3) 7:54.63 +3.80	2
(4)	Summerville 2	1:53.82 +9.82	(4) 3:56.82 +4.89	(4) 5:58.63 +7.14	(4) 8:00.73 +9.90	4
(5)	Summerville 3	1:57.74 +14.74	(5) 3:58.45 +7.27	(5) 6:00.87 +9.28	(5) 8:03.22 +12.39	1
(6)	Summerville 4	1:58.66 +15.66	(6) 4:04.36 +13.23	(6) 6:10.85 +19.16	(6) 8:18.29 +27.46	6

If all OK : the Responsible signs  
and says  
‘ Race XX OFFICIAL’  
(LOUD please!!!)



AN (b) PRESTON Sheryl	4.86	2:00.66 (5)	7.27	2:02.47 (4)	9.38	2:02.35 (4)	12.39
E2 (b) KNEJP Kristina	1:59.46 (6)	4:04.36 (6)	6:10.85 (6)	8:18.29	FB		
	6.58	2:04.90 (6)	2:06.29 (6)	2:07.64 (6)	27.46		

1-3 to Final A, Remainder to Final B (1-3->FA, 4...->FB)

Next round of races shall be ranked last in the overall event placing.

rowing.com

Page 1 / 1

data processing by **SWISS TIMING**

Report Created SAT 10 JUL 2010 / 08:40



# Responsible at the Finish





# Judge at the Finish





# Responsible at the Finish





# Responsible at the Finish





# Example 1

# Example 1

## MEN LIGHTWEIGHT DOUBLE SCULL

EVENT 12  
LM2X

H1

Rank	Line	Crew	500 m	1000 m	1500 m	2000 m
1	5	<b>CAN</b> XXXXXXXXXX	1' 52 " 91 (6)	3' 37 " 34 (1) 1' 44 " 43 (1)	5' 31 " 42 (1) 1' 54 " 08 (2)	7' 19 " 30 (1) S 1' 47 " 88 (3)
2	1	<b>ITA</b> XXXXXXXXXX	1' 44 " 52 (2)	3' 38 " 93 (2) 1' 54 " 41 (4)	5' 33 " 56 (2) 1' 54 " 63 (4)	7' 20 " 59 (2) R 1' 47 " 03 (2) 0' 01 " 29
3	4	<b>RUS</b> XXXXXXXXXX	1' 51 " 94 (5)	3' 41 " 46 (4) 1' 49 " 52 (2)	5' 37 " 30 (5) 1' 55 " 84 (5)	7' 22 " 82 (3) R 1' 45 " 52 (1) 0' 03 " 52
4	3	<b>DEN</b> XXXXXXXXXX	1' 46 " 72 (3)	3' 40 " 30 (3) 1' 53 " 58 (3)	5' 34 " 33 (3) 1' 54 " 03 (1)	7' 26 " 00 (4) R 1' 51 " 67 (4) 0' 06 " 70
5	2	<b>HKG</b> XXXXXXXXXX	1' 47 " 98 (4)	3' 42 " 45 (5) 1' 54 " 47 (5)	5' 37 " 02 (4) 1' 54 " 57 (3)	7' 34 " 01 (5) R 1' 56 " 99 (6) 0' 14 " 71
6	6	<b>USA</b> XXXXXXXXXX	1' 42 " 86 (1)	3' 44 " 20 (6) 2' 01 " 34 (6)	5' 44 " 00 (6) 1' 59 " 80 (6)	7' 35 " 95 (6) R 1' 51 " 95 (5) 0' 16 " 65

# Example 1

## MEN LIGHTWEIGHT DOUBLE SCULL

EVENT 12  
LM2X

H1

Rank	Line	Crew	500 m	1000 m	1500 m	2000 m
1	5	<b>CAN</b> XXXXXXXXXX	1' 52" 91 (6)	3' 37" 34 (1) 1' 44" 43 (1)	5' 31" 42 (1) 1' 54" 08 (2)	7' 19" 30 (1) S 1' 47" 88 (3)
2	1	<b>ITA</b> XXXXXXXXXX	1' 44" 52 (2)	3' 38" 93 (2) 1' 54" 41 (4)	5' 33" 56 (2) 1' 54" 63 (4)	7' 20" 59 (2) R 1' 47" 03 (2) 0' 01" 29
3	4	<b>RUS</b> XXXXXXXXXX	1' 51" 94 (5)	3' 41" 46 (4) 1' 49" 52 (2)	5' 37" 30 (5) 1' 55" 84 (5)	7' 22" 82 (3) R 1' 45" 52 (1) 0' 03" 52
4	3	<b>DEN</b> XXXXXXXXXX	1' 46" 72 (3)	3' 40" 30 (3) 1' 53" 58 (3)	5' 34" 33 (3) 1' 54" 03 (1)	7' 26" 00 (4) R 1' 51" 67 (4) 0' 06" 70
5	2	<b>HKG</b> XXXXXXXXXX	1' 47" 98 (4)	3' 42" 45 (5) 1' 54" 47 (5)	5' 37" 02 (4) 1' 54" 57 (3)	7' 34" 01 (5) R 1' 56" 99 (6) 0' 14" 71
6	6	<b>USA</b> XXXXXXXXXX	1' 42" 86 (1)	3' 44" 20 (6) 2' 01" 34 (6)	5' 44" 00 (6) 1' 59" 80 (6)	7' 35" 95 (6) R 1' 51" 95 (5) 0' 16" 65



# Example 1

## MEN LIGHTWEIGHT DOUBLE SCULL

EVENT 12  
LM2X

H1

Rank	Line	Crew	500 m	1000 m	1500 m	2000 m
1	5	<b>CAN</b> XXXXXXXXXX	<b>dna</b>	3 ' 37 " 34 (1)	5 ' 31 " 42 (1) 1 ' 54 " 08 (2)	7 ' 19 " 30 (1) S 1 ' 47 " 88 (3)
2	1	<b>ITA</b> XXXXXXXXXX	<b>dna</b>	3 ' 38 " 93 (2)	5 ' 33 " 56 (2) 1 ' 54 " 63 (4)	7 ' 20 " 59 (2) R 1 ' 47 " 03 (2) 0 ' 01 " 29
3	4	<b>RUS</b> XXXXXXXXXX	<b>dna</b>	3 ' 41 " 46 (4)	5 ' 37 " 30 (5) 1 ' 55 " 84 (5)	7 ' 22 " 82 (3) R 1 ' 45 " 52 (1) 0 ' 03 " 52
4	3	<b>DEN</b> XXXXXXXXXX	<b>dna</b>	3 ' 40 " 30 (3)	5 ' 34 " 33 (3) 1 ' 54 " 03 (1)	7 ' 26 " 00 (4) R 1 ' 51 " 67 (4) 0 ' 06 " 70
5	2	<b>HKG</b> XXXXXXXXXX	<b>dna</b>	3 ' 42 " 45 (5)	5 ' 37 " 02 (4) 1 ' 54 " 57 (3)	7 ' 34 " 01 (5) R 1 ' 56 " 99 (6) 0 ' 14 " 71
6	6	<b>USA</b> XXXXXXXXXX	<b>dna</b>	3 ' 44 " 20 (6)	5 ' 44 " 00 (6) 1 ' 59 " 80 (6)	7 ' 35 " 95 (6) R 1 ' 51 " 95 (5) 0 ' 16 " 65

# Example 2

# Example 2

Shanghai, China

21 - 28 September 2025

6

Results

M4-

(Event)

Men's Four

H1

MON 22 SEP 2025

Race 26

World Best:	GBR	GREGORY A. / REED P. / JAMES T. / HODGE A.	Lucerne (SUI) 2012	World Cup	5:37.86
World Champ' Best:	GBR	GREGORY A. / SBIHI M. / NASH G. / HODGE A.	Amsterdam (NED) 2014	World Championships	5:40.24
World Champion:	GBR	WILKES O. / AMBLER D. / ALDRIDGE M / DAVIDSON F.	Belgrade (SRB) 2023	World Championships	6:04.35

Rank	Lane	Ctry Code	Name	500m	1000m	1500m	2000m	Prog. Code
1	3	ROU	(b) BERARIU Stefan Constanti (2) BEJAN Sergiu Vasile (3) MANDRILA Andrei (s) TUDOSA Ciprian	1:24.66 (1)	2:55.00 (1) 1:30.34 (1)	4:25.94 (1) 1:30.94 (2)	5:57.83 (2) 1:31.89 (2)	S
2	4	NZL	(b) DUNHAM Matthew (2) RUMBLE Zackary (3) CROUCH Campbell (s) ELIADIS-WATSON Flynn	1:27.25 (3) 2.59	2:58.16 (2) 1:30.91 (2) 3.16	4:28.96 (2) 1:30.80 (1) 3.02	6:00.69 (1) 1:31.73 (1) 2.86	S
3	1	UZB	(b) KARIMOV Fazliddin (2) KHUDOYBERDIEV Dilshodjon (3) DAVRONOV Davrjon (s) TURDIEV Alisher	1:26.65 (2) 1.99	2:59.07 (3) 1:32.42 (4) 4.07	4:30.02 (3) 1:30.95 (3) 4.08	6:02.37 (3) 1:32.35 (3) 4.54	TBC
4	5	CAN	(b) EWASHKO Axel Eiger (2) CLEGG Ryan (3) ROSTS Steven (s) CULLEN Joel	1:27.30 (4) 2.64	2:59.67 (4) 1:32.37 (3) 4.67	4:31.51 (4) 1:31.84 (4) 5.57	6:09.10 (4) 1:37.59 (4) 11.27	TBC
5	2	HKG	(b) CHAN Tik Lun (2) CHEN Pak Hong (3) LAM San Tung (s) TO Siu Po	1:29.45 (5) 4.79	3:01.91 (5) 1:32.46 (5) 6.91	4:35.62 (5) 1:33.71 (5) 9.68	6:16.24 (5) 1:40.62 (5) 18.41	TBC

Progression System:

1-2 in each heat and 4 fastest times of the remaining crews (1HT-4HT) to Semifinal. Other crews to Final C and remaining crew eliminated.



# Example 2

Shanghai, China

21 - 28 September 2025

6  
(Event)

Results  
Men's Four  
MON 22 SEP 2025

M4-  
H1  
Race 26

World Best:	GBR	GREGORY A. / REED P. / JAMES T. / HODGE A.	Lucerne (SUI) 2012	World Cup	5:37.86
World Champ' Best:	GBR	GREGORY A. / SBIHI M. / NASH G. / HODGE A.	Amsterdam (NED) 2014	World Championships	5:40.24
World Champion:	GBR	WILKES O. / AMBLER D. / ALDRIDGE M. / DAVIDSON F.	Belgrade (SRB) 2023	World Championships	6:04.35

Rank	Lane	Ctry Code	Name	500m	1000m	1500m	2000m	Prog. Code
1	3	ROU	(b) BERARIU Stefan Constanti (2) BEJAN Sergiu Vasile (3) MANDRILA Andrei (s) TUDOSA Ciprian	1:24.66 (1)	2:55.00 (1) 1:30.34 (1)	4:25.94 (1) 1:30.94 (2)	5:57.83 (2) 1:31.89 (2)	S
2	4	NZL	(b) DUNHAM Matthew (2) RUMBLE Zackary (3) CROUCH Campbell (s) ELIADIS-WATSON Flynn	1:27.25 (3) 2.59	2:58.16 (2) 1:30.91 (2) 3.16	4:28.96 (2) 1:30.80 (1) 3.02	6:00.69 (1) 1:31.73 (1) 2.86	S
3	1	UZB	(b) KARIMOV Fazliddin (2) KHUDOYBERDIEV Dilshodjon (3) DAVRONOV Davrjon (s) TURDIEV Alisher	1:26.65 (2) 1.99	2:59.07 (3) 1:32.42 (4) 4.07	4:30.02 (3) 1:30.95 (3) 4.08	6:02.37 (3) 1:32.35 (3) 4.54	S
4	5	CAN	(b) EWASHKO Axel Eiger (2) CLEGG Ryan (3) ROSTS Steven (s) CULLEN Joel	1:27.30 (4) 2.64	2:59.67 (4) 1:32.37 (3) 4.67	4:31.51 (4) 1:31.84 (4) 5.57	6:09.10 (4) 1:37.59 (4) 11.27	FC
5	2	HKG	(b) CHAN Tik Lun (2) CHEN Pak Hong (3) LAM San Tung (s) TO Siu Po	1:29.45 (5) 4.79	3:01.91 (5) 1:32.46 (5) 6.91	4:35.62 (5) 1:33.71 (5) 9.68	BUW ELM	

Progression System: 1-2 in each heat and 4 fastest times of the remaining crews (1HT-4HT) to Semifinal. Other crews to Final C and remaining crew eliminated.

A crew with a BUW is not given a time and therefore in a heat will be moved to the bottom of the rankings

# Example 2

A BUW affects not only the results of it's race but may now requirement revisions to the results of other races and start lists.

Shanghai, China									
21 - 28 September 2025									
6 (Event)									
Results									
Men's Four									
MON 22 SEP 2025									
M4-H2 Race 27									
World Best:		GBR	GREGORY A. / REED P. / JAMES T. / HODGE A.	Lucerne (SUI) 2012	World Cup		GBR	GREGORY A. / REED P. / JAMES T. / HODGE A.	5:37.86
World Champ' Best:		GBR	GREGORY A. / SBIHI M. / NASH G. / HODGE A.	Amsterdam (NED) 2014	World Championships		GBR	GREGORY A. / SBIHI M. / NASH G. / HODGE A.	5:40.24
World Champion:		GBR	WILKES O. / AMBLER D. / ALDRIDGE M. / DAVIDSON F.	Belgrade (SRB) 2023	World Championships		GBR	WILKES O. / AMBLER D. / ALDRIDGE M. / DAVIDSON F.	6:04.35
Rank	Lane	Ctry Code	Name	500m	1000m	1500m	2000m	Prog. Code	
1	3	GBR	(b) GRAHAM Daniel (2) ROBSON James (3) de GRAAF Douwe (s) BOURNE George	1:24.83 (1)	2:53.85 (1)	4:22.66 (1)	5:54.18 (1)	S	
2	4	AUS	(b) PENDER Nikolas (2) HAMILTON Fergus (3) REINEHR Austin (s) HILL Alex	1:25.99 (2)	2:56.86 (2)	4:26.58 (2)	5:56.54 (2)	S	
3	2	NED	(b) van LIEROP Lennart (2) TWELLAAR Melvin (3) KROMMENHOEK Guillaume (s) van DOORN Gert-Jan	1:27.09 (3)	2:57.78 (3)	4:27.23 (3)	5:59.80 (3)	S	
4	5	ESP	(b) KNABE Jorge (2) SANCHEZ BATLLE Pau (3) PALOMINO Juan Miguel (s) PASTOR Eric	1:28.81 (5)	3:02.90 (4)	4:37.63 (4)	6:11.74 (4)	FC	
5	1	CHN	(b) LI Fuyi (2) MA Wenbo (3) GUO Yitwen (s) GUO Tingbiao	1:28.10 (4)	3:03.93 (5)	4:42.41 (5)	6:19.94 (5)	FC	

Progression System: 1-2 in each heat and 4 fastest times of the remaining crews (1HT-4HT) to Semifinal. Other crews to Final C and remaining crew eliminated.

Shanghai, China

21 - 28 September 2025

6

(Event)

Start List

Men's Four

Races 69,106,112

World Best:	GBR	GREGORY A. / REED P. / JAMES T. / HODGE A.	Lucerne (SUI) 2012	World Cup	5:37.86
World Champ Best:	GBR	GREGORY A. / SBIHI M. / NASH G. / HODGE A.	Amsterdam (NED) 2014	World Championships	5:40.24
World Champion:	GBR	WILKES O. / AMBLER D. / ALDRIDGE M. / DAVIDSON F.	Belgrade (SRB) 2023	World Championships	6:04.35

Lane 1	Lane 2	Lane 3	Lane 4	Lane 5	Lane 6
Race 69 / WED 24 SEP 2025 / 12:00 / Final C					
HKG (b) CHAN TL (2) CHEN PH (3) LAM ST (s) TO SP	ESP KNABE J SANCHEZ BATLLE P PALOMINO JM PASTOR E	DEN LARSEN JV RATHENBORG M POULSEN A VALBIRK M	GER SCHROEDER WN SCHMELA R JOHN M AMELINGMEYER F	CAN EWASHKO AE CLEGG R ROSTS S CULLEN J	CZE CHLADEK J VOKALEK M BALDINUS V SISMA T
Race 106 / FRI 26 SEP 2025 / 13:53 / Final B					
TO BE CONFIRMED					
Race 112 / FRI 26 SEP 2025 / 15:19 / Final A					
TO BE CONFIRMED					

Shanghai, China

21 - 28 September 2025

6

(Event)

Start List

Men's Four

M4-F

Races 69,106,112

World Best: GBR GREGORY A. / REED P. / JAMES T. / HODGE A. Lucerne (SUI) 2012 World Cup 5:37.86

World Champ' Best: GBR GREGORY A. / SBIHI M. / NASH G. / HODGE A. Amsterdam (NED) 2014 World Championships 5:40.24

World Champion: GBR WILKES O. / AMBLER D. / ALDRIDGE M. / DAVIDSON F. Belgrade (SRB) 2023 World Championships 6:04.35

Lane 1

Lane 2

Lane 3

Lane 4

Lane 5

Lane 6

Race 69 / WED 24 SEP 2025 / 12:00 / Final C

CHN

(b) LI F

(2) MA W

(3) GUO Y

(s) GUO T

ESP

KNABE J

SANCHEZ BATLLE P

PALOMINO JM

PASTOR E

DEN

LARSEN JV

RATHENBORG M

POULSEN A

VALBIRK M

GER

SCHROEDER WN

SCHMELA R

JOHN M

AMELINGMEYER F

CAN

EWASHKO AE

CLEGG R

ROSTS S

CULLEN J

CZE

CHLADEK J

VOKALEK M

BALDINUS V

SISMA T

Race 106 / FRI 26 SEP 2025 / 13:53 / Final B

TO BE CONFIRMED

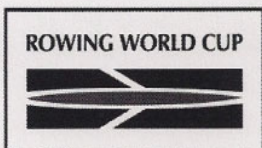
Race 112 / FRI 26 SEP 2025 / 15:19 / Final A

TO BE CONFIRMED

# Example 3



# Example 3



RWC III Lucerne, Switzerland

09 - 11 July 2010

**2**  
(Event)

## RESULTS Men's Pair - Repechage 1 FRI 09 JUL 2010

**M2-  
R1  
Race 81**

World Best Time:	GBR	CRACKNELL/ PINSENT	Seville (ESP) 2002	6:14.27
World Champion:	NZL	MURRAY/ BOND	Poznan (POL) 2009 World Champ'ships	6:15.93

Rank	Lane	NOC Code	Name	500m	1000m	1500m	2000m	Qual. Code
1	4	RSA	(b) KEELING Shaun (s) DI CLEMENTE Ramon	1:35.42 (1)	3:15.81 (1) 1:40.39 (3)	4:57.09 (1) 1:41.28 (4)	6:35.82 1:38.73 (4)	SA/B
2	5	AUS	(b) COUDRAYE Bryn (s) GRIMM Dominic	1:36.26 (2) 0.84	3:16.48 (2) 1:40.22 (2) 0.67	4:57.49 (2) 1:41.01 (2) 0.40	6:35.93 1:38.44 (3) 0.11	?? ReRow
2	1	GER2	(b) NARUHN Philipp (s) EICHNER Florian	1:37.94 (3) 2.52	3:18.10 (3) 1:40.16 (1) 2.29	4:59.20 (3) 1:41.10 (3) 2.11	6:35.93 1:36.73 (1) 0.11	?? ReRow
4	6	FRA2	(b) LENTE Sebastien (s) RONDEAU Benjamin	DNA	DNA	DNA	6:39.54 3.72	FC
5	2	IRL	(b) FOLAN Cormac (s) JACOB Sean	1:38.64 (4) 3.22	3:20.28 (4) 1:41.64 (4) 4.47	5:00.72 (4) 1:40.44 (1) 3.63	6:40.64 1:39.92 (5) 4.82	FC
6	3	FRA1	(b) HARDY Adrien (s) CADOT Laurent	1:39.96 (5) 4.54	3:22.40 (5) 1:42.44 (5) 6.59	5:04.00 (5) 1:41.60 (5) 6.91	6:41.98 1:37.98 (2) 6.16	FD

Qualification Rules: 1-2 to Semifinal A/B, 3-5 to Final C, Remainder to Final D (1-2->SA/B, 3-5->FC, 6.->FD)

Luzern - M2- R1 (81-1-1)

Ziel - Main

Start: 09.07.2010 17:06:02.61



5:35.70 6:35.90 6:36.10 6:36.30 6:36.50 6:36.70 6:36.90 6:37.10 6:37.30 6:37.50 6:37.70 6:37.90 6:38.10 6:38.30 6:38.50 6:38.70 6:38.90 6:39.10 6:39.30 6:39.50 6:39.70 6:39.90 6:40.10 6:40.30 6:40.50 6:40.70 6:40.90 6:41.10 6:41.30 6:41.50 6:41.70 6:41.90 6:42.10 6:42.30 6:42.50 6:42.70 6:42.90 6:43.10 6:43.30 6:43.50 6:43.70 6:43.90 6:44.10 6:44.30 6:44.50 6:44.70 6:44.90 6:45.10 6:45.30 6:45.50 6:45.70 6:45.90 6:46.10 6:46.30 6:46.50 6:46.70 6:46.90 6:47.10 6:47.30 6:47.50 6:47.70 6:47.90 6:48.10 6:48.30 6:48.50 6:48.70 6:48.90 6:49.10 6:49.30 6:49.50 6:49.70 6:49.90 6:50.10 6:50.30 6:50.50 6:50.70 6:50.90 6:51.10 6:51.30 6:51.50 6:51.70 6:51.90 6:52.10 6:52.30 6:52.50 6:52.70 6:52.90 6:53.10 6:53.30 6:53.50 6:53.70 6:53.90 6:54.10 6:54.30 6:54.50 6:54.70 6:54.90 6:55.10 6:55.30 6:55.50 6:55.70 6:55.90 6:56.10 6:56.30 6:56.50 6:56.70 6:56.90 6:57.10 6:57.30 6:57.50 6:57.70 6:57.90 6:58.10 6:58.30 6:58.50 6:58.70 6:58.90 6:59.10 6:59.30 6:59.50 6:59.70 6:59.90 7:00.10 7:00.30 7:00.50 7:00.70 7:00.90 7:01.10 7:01.30 7:01.50 7:01.70 7:01.90 7:02.10 7:02.30 7:02.50 7:02.70 7:02.90 7:03.10 7:03.30 7:03.50 7:03.70 7:03.90 7:04.10 7:04.30 7:04.50 7:04.70 7:04.90 7:05.10 7:05.30 7:05.50 7:05.70 7:05.90 7:06.10 7:06.30 7:06.50 7:06.70 7:06.90 7:07.10 7:07.30 7:07.50 7:07.70 7:07.90 7:08.10 7:08.30 7:08.50 7:08.70 7:08.90 7:09.10 7:09.30 7:09.50 7:09.70 7:09.90 7:10.10 7:10.30 7:10.50 7:10.70 7:10.90 7:11.10 7:11.30 7:11.50 7:11.70 7:11.90 7:12.10 7:12.30 7:12.50 7:12.70 7:12.90 7:13.10 7:13.30 7:13.50 7:13.70 7:13.90 7:14.10 7:14.30 7:14.50 7:14.70 7:14.90 7:15.10 7:15.30 7:15.50 7:15.70 7:15.90 7:16.10 7:16.30 7:16.50 7:16.70 7:16.90 7:17.10 7:17.30 7:17.50 7:17.70 7:17.90 7:18.10 7:18.30 7:18.50 7:18.70 7:18.90 7:19.10 7:19.30 7:19.50 7:19.70 7:19.90 7:20.10 7:20.30 7:20.50 7:20.70 7:20.90 7:21.10 7:21.30 7:21.50 7:21.70 7:21.90 7:22.10 7:22.30 7:22.50 7:22.70 7:22.90 7:23.10 7:23.30 7:23.50 7:23.70 7:23.90 7:24.10 7:24.30 7:24.50 7:24.70 7:24.90 7:25.10 7:25.30 7:25.50 7:25.70 7:25.90 7:26.10 7:26.30 7:26.50 7:26.70 7:26.90 7:27.10 7:27.30 7:27.50 7:27.70 7:27.90 7:28.10 7:28.30 7:28.50 7:28.70 7:28.90 7:29.10 7:29.30 7:29.50 7:29.70 7:29.90 7:30.10 7:30.30 7:30.50 7:30.70 7:30.90 7:31.10 7:31.30 7:31.50 7:31.70 7:31.90 7:32.10 7:32.30 7:32.50 7:32.70 7:32.90 7:33.10 7:33.30 7:33.50 7:33.70 7:33.90 7:34.10 7:34.30 7:34.50 7:34.70 7:34.90 7:35.10 7:35.30 7:35.50 7:35.70 7:35.90 7:36.10 7:36.30 7:36.50 7:36.70 7:36.90 7:37.10 7:37.30 7:37.50 7:37.70 7:37.90 7:38.10 7:38.30 7:38.50 7:38.70 7:38.90 7:39.10 7:39.30 7:39.50 7:39.70 7:39.90 7:40.10 7:40.30 7:40.50 7:40.70 7:40.90 7:41.10 7:41.30 7:41.50 7:41.70 7:41.90 7:42.10 7:42.30 7:42.50 7:42.70 7:42.90 7:43.10 7:43.30 7:43.50 7:43.70 7:43.90 7:44.10 7:44.30 7:44.50 7:44.70 7:44.90 7:45.10 7:45.30 7:45.50 7:45.70 7:45.90 7:46.10 7:46.30 7:46.50 7:46.70 7:46.90 7:47.10 7:47.30 7:47.50 7:47.70 7:47.90 7:48.10 7:48.30 7:48.50 7:48.70 7:48.90 7:49.10 7:49.30 7:49.50 7:49.70 7:49.90 7:50.10 7:50.30 7:50.50 7:50.70 7:50.90 7:51.10 7:51.30 7:51.50 7:51.70 7:51.90 7:52.10 7:52.30 7:52.50 7:52.70 7:52.90 7:53.10 7:53.30 7:53.50 7:53.70 7:53.90 7:54.10 7:54.30 7:54.50 7:54.70 7:54.90 7:55.10 7:55.30 7:55.50 7:55.70 7:55.90 7:56.10 7:56.30 7:56.50 7:56.70 7:56.90 7:57.10 7:57.30 7:57.50 7:57.70 7:57.90 7:58.10 7:58.30 7:58.50 7:58.70 7:58.90 7:59.10 7:59.30 7:59.50 7:59.70 7:59.90 8:00.10 8:00.30 8:00.50 8:00.70 8:00.90 8:01.10 8:01.30 8:01.50 8:01.70 8:01.90 8:02.10 8:02.30 8:02.50 8:02.70 8:02.90 8:03.10 8:03.30 8:03.50 8:03.70 8:03.90 8:04.10 8:04.30 8:04.50 8:04.70 8:04.90 8:05.10 8:05.30 8:05.50 8:05.70 8:05.90 8:06.10 8:06.30 8:06.50 8:06.70 8:06.90 8:07.10 8:07.30 8:07.50 8:07.70 8:07.90 8:08.10 8:08.30 8:08.50 8:08.70 8:08.90 8:09.10 8:09.30 8:09.50 8:09.70 8:09.90 8:10.10 8:10.30 8:10.50 8:10.70 8:10.90 8:11.10 8:11.30 8:11.50 8:11.70 8:11.90 8:12.10 8:12.30 8:12.50 8:12.70 8:12.90 8:13.10 8:13.30 8:13.50 8:13.70 8:13.90 8:14.10 8:14.30 8:14.50 8:14.70 8:14.90 8:15.10 8:15.30 8:15.50 8:15.70 8:15.90 8:16.10 8:16.30 8:16.50 8:16.70 8:16.90 8:17.10 8:17.30 8:17.50 8:17.70 8:17.90 8:18.10 8:18.30 8:18.50 8:18.70 8:18.90 8:19.10 8:19.30 8:19.50 8:19.70 8:19.90 8:20.10 8:20.30 8:20.50 8:20.70 8:20.90 8:21.10 8:21.30 8:21.50 8:21.70 8:21.90 8:22.10 8:22.30 8:22.50 8:22.70 8:22.90 8:23.10 8:23.30 8:23.50 8:23.70 8:23.90 8:24.10 8:24.30 8:24.50 8:24.70 8:24.90 8:25.10 8:25.30 8:25.50 8:25.70 8:25.90 8:26.10 8:26.30 8:26.50 8:26.70 8:26.90 8:27.10 8:27.30 8:27.50 8:27.70 8:27.90 8:28.10 8:28.30 8:28.50 8:28.70 8:28.90 8:29.10 8:29.30 8:29.50 8:29.70 8:29.90 8:30.10 8:30.30 8:30.50 8:30.70 8:30.90 8:31.10 8:31.30 8:31.50 8:31.70 8:31.90 8:32.10 8:32.30 8:32.50 8:32.70 8:32.90 8:33.10 8:33.30 8:33.50 8:33.70 8:33.90 8:34.10 8:34.30 8:34.50 8:34.70 8:34.90 8:35.10 8:35.30 8:35.50 8:35.70 8:35.90 8:36.10 8:36.30 8:36.50 8:36.70 8:36.90 8:37.10 8:37.30 8:37.50 8:37.70 8:37.90 8:38.10 8:38.30 8:38.50 8:38.70 8:38.90 8:39.10 8:39.30 8:39.50 8:39.70 8:39.90 8:40.10 8:40.30 8:40.50 8:40.70 8:40.90 8:41.10 8:41.30 8:41.50 8:41.70 8:41.90 8:42.10 8:42.30 8:42.50 8:42.70 8:42.90 8:43.10 8:43.30 8:43.50 8:43.70 8:43.90 8:44.10 8:44.30 8:44.50 8:44.70 8:44.90 8:45.10 8:45.30 8:45.50 8:45.70 8:45.90 8:46.10 8:46.30 8:46.50 8:46.70 8:46.90 8:47.10 8:47.30 8:47.50 8:47.70 8:47.90 8:48.10 8:48.30 8:48.50 8:48.70 8:48.90 8:49.10 8:49.30 8:49.50 8:49.70 8:49.90 8:50.10 8:50.30 8:50.50 8:50.70 8:50.90 8:51.10 8:51.30 8:51.50 8:51.70 8:51.90 8:52.10 8:52.30 8:52.50 8:52.70 8:52.90 8:53.10 8:53.30 8:53.50 8:53.70 8:53.90 8:54.10 8:54.30 8:54.50 8:54.70 8:54.90 8:55.10 8:55.30 8:55.50 8:55.70 8:55.90 8:56.10 8:56.30 8:56.50 8:56.70 8:56.90 8:57.10 8:57.30 8:57.50 8:57.70 8:57.90 8:58.10 8:58.30 8:58.50 8:58.70 8:58.90 8:59.10 8:59.30 8:59.50 8:59.70 8:59.90 9:00.10 9:00.30 9:00.50 9:00.70 9:00.90 9:01.10 9:01.30 9:01.50 9:01.70 9:01.90 9:02.10 9:02.30 9:02.50 9:02.70 9:02.90 9:03.10 9:03.30 9:03.50 9:03.70 9:03.90 9:04.10 9:04.30 9:04.50 9:04.70 9:04.90 9:05.10 9:05.30 9:05.50 9:05.70 9:05.90 9:06.10 9:06.30 9:06.50 9:06.70 9:06.90 9:07.10 9:07.30 9:07.50 9:07.70 9:07.90 9:08.10 9:08.30 9:08.50 9:08.70 9:08.90 9:09.10 9:09.30 9:09.50 9:09.70 9:09.90 9:10.10 9:10.30 9:10.50 9:10.70 9:10.90 9:11.10 9:11.30 9:11.50 9:11.70 9:11.90 9:12.10 9:12.30 9:12.50 9:12.70 9:12.90 9:13.10 9:13.30 9:13.50 9:13.70 9:13.90 9:14.10 9:14.30 9:14.50 9:14.70 9:14.90 9:15.10 9:15.30 9:15.50 9:15.70 9:15.90 9:16.10 9:16.30 9:16.50 9:16.70 9:16.90 9:17.10 9:17.30 9:17.50 9:17.70 9:17.90 9:18.10 9:18.30 9:18.50 9:18.70 9:18.90 9:19.10 9:19.30 9:19.50 9:19.70 9:19.90 9:20.10 9:20.30 9:20.50 9:20.70 9:20.90 9:21.10 9:21.30 9:21.50 9:21.70 9:21.90 9:22.10 9:22.30 9:22.50 9:22.70 9:22.90 9:23.10 9:23.30 9:23.50 9:23.70 9:23.90 9:24.10 9:24.30 9:24.50 9:24.70 9:24.90 9:25.10 9:25.30 9:25.50 9:25.70 9:25.90 9:26.10 9:26.30 9:26.50 9:26.70 9:26.90 9:27.10 9:27.30 9:27.50 9:27.70 9:27.90 9:28.10 9:28.30 9:28.50 9:28.70 9:28.90 9:29.10 9:29.30 9:29.50 9:29.70 9:29.90 9:30.10 9:30.30 9:30.50 9:30.70 9:30.90 9:31.10 9:31.30 9:31.50 9:31.70 9:31.90 9:32.10 9:32.30 9:32.50 9:32.70 9:32.90 9:33.10 9:33.30 9:33.50 9:33.70 9:33.90 9:34.10 9:34.30 9:34.50 9:34.70 9:34.90 9:35.10 9:35.30 9:35.50 9:35.70 9:35.90 9:36.10 9:36.30 9:36.50 9:36.70 9:36.90 9:37.10 9:37.30 9:37.50 9:37.70 9:37.90 9:38.10 9:38.30 9:38.50 9:38.70 9:38.90 9:39.10 9:39.30 9:39.50 9:39.70 9:39.90 9:40.10 9:40.30 9:40.50 9:40.70 9:40.90 9:41.10 9:41.30 9:41.50 9:41.70 9:41.90 9:42.10 9:42.30 9:42.50 9:42.70 9:42.90 9:43.10 9:43.30 9:43.50 9:43.70 9:43.90 9:44.10 9:44.30 9:44.50 9:44.70 9:44.90 9:45.10 9:45.30 9:45.50 9:45.70 9:45.90 9:46.10 9:46.30 9:46.50 9:46.70 9:46.90 9:47.10 9:47.30 9:47.50 9:47.70 9:47.90 9:48.10 9:48.30 9:48.50 9:48.70 9:48.90 9:49.10 9:49.30 9:49.50 9:49.70 9:49.90 9:50.10 9:50.30 9:50.50 9:50.70 9:50.90 9:51.10 9:51.30 9:51.50 9:51.70 9:51.90 9:52.10 9:52.30 9:52.50 9:52.70 9:52.90 9:53.10 9:53.30 9:53.50 9:53.70 9:53.90 9:54.10 9:54.30 9:54.50 9:54.70 9:54.90 9:55.10 9:55.30 9:55.50 9:55.70 9:55.90 9:56.10 9:56.30 9:56.50 9:56.70 9:56.90 9:57.10 9:57.30 9:57.50 9:57.70 9:57.90 9:58.10 9:58.30 9:58.50 9:58.70 9:58.90 9:59.10 9:59.30 9:59.50 9:59.70 9:59.90 10:00.10 10:00.30 10:00.50 10:00.70 10:00.90 10:01.10 10:01.30 10:01.50 10:01.70 10:01.90 10:02.10 10:02.30 10:02.50 10:02.70 10:02.90 10:03.10 10:03.30 10:03.50 10:03.70 10:03.90 10:04.10 10:04.30 10:04.50 10:04.70 10:04.90 10:05.10 10:05.30 10:05.50 10:05.70 10:05.90 10:06.10 10:06.30 10:06.50 10:06.70 10:06.90 10:07.10 10:07.30 10:07.50 10:07.70 10:07.90 10:08.10 10:08.30 10:08.50 10:08.70 10:08.90 10:09.10 10:09.30 10:09.50 10:09.70 10:09.90 10:10.10 10:10.30 10:10.50 10:10.70 10:10.90 10:11.10 10:11.30 10:11.50 10:11.70 10:11.90 10:12.10 10:12.30 10:12.50 10:12.70 10:12.90 10:13.10 10:13.30 10:13.50 10:13.70 10:13.90 10:14.10 10:14.30 10:14.50 10:14.70 10:14.90 10:15.10 10:15.30 10:15.50 10:15.70 10:15.90 10:16.10 10:16.30 10:16.50 10:16.70 10:16.90 10:17.10 10:17.30 10:17.50 10:17.70 10:17.90 10:18.10 10:18.30 10:18.50 10:18.70 10:18.90 10:19.10 10:19.30 10:19.50 10:19.70 10:19.90 10:20.10 10:20.30 10:20.50 10:20.70 10:20.90 10:21.10 10:21.30 10:21.50 10:21.70 10:21.90 10:22.10 10:22.30 10:22.50 10:22.70 10:22.90 10:23.10 10:23.30 10:23.50 10:23.70 10:23.90 10:24.10 10:24.30 10:24.50 10:24.70 10:24.90 10:25.10 10:25.30 10:25.50 10:25.70 10:25.90 10:26.10 10:26.30 10:26.50 10:26.70 10:26.90 10:27.10 10:27.30 10:27.50 10:27.70 10:27.90 10:28.10 10:28.30 10:28.50 10:28.70 10:28.90 10:29.10 10:29.30 10:29.50 10:29.70 10:29.90 10:30.10 10:30.30 10:30.50 10:30.70 10:30.90 10:31.10 10:31.30 10:31.50 10:31.70 10:31.90 10:32.10 10:32.30 10:32.50 10:32.70 10:32.90 10:33.10 10:33.30 10:33.50 10:33.70 10:33.90 10:34.10 10:34.30 10:34.50 10:34.70 10:34.90 10:35.10 10:35.30 10:35.50 10:35.70 10:35.90 10:36.10 10:36.30 10:36.50 10:36.70 10:36.90 10:37.10 10:37.30 10:37.50 10:37.70 10:37.90 10:38.10 10:38.30 10:38.50 10:38.70 10:38.90 10:39.10 10:39.30 10:39.50 10:39.70 10:39.90 10:40.10 10:40.30 10:40.50 10:40.70 10:40.90 10:41.10 10:41.30 10:41.50 10:41.70 10:41.90 10:42.10 10:42.30 10:42.50 10:42.70 10:42.90 10:43.10 10:43.30 10:43.50 10:43.70 10:43.90 10:44.10 10:44.30 10:44.50 10:44.70 10:44.90 10:45.10 10:45.30 10:45.50 10:45.70 10:45.90 10:46.10 10:46.30 10:46.50 10:46.70 10:46.90 10:47.10 10:47.30 10:47.50 10:47.70 10:47.90 10:48.10 10:48.30 10:48.50 10:48.70 10:48.90 10:49.10 10:49.30 10:49.50 10:49.70 10:49.90 10:50.10 10:50.30 10:50.50 10:50.70 10:50.90 10:51.10 10:51.30 10:51.

# Example 3



RWC III Lucerne, Switzerland

09 - 11 July 2010

**2**  
(Event)

## RESULTS

**M2-**

**Men's Pair - Repechage Re-Row 3**

**R3**

**FRI 09 JUL 2010**

**Race 215**

World Best Time: <b>GBR</b>	CRACKNELL/ PINSENT	Seville (ESP) 2002	<b>6:14.27</b>
World Champion: <b>NZL</b>	MURRAY/ BOND	Poznan (POL) 2009	World Champ'ships <b>6:15.93</b>

Rank	Lane	NOC Code	Name	500m	1000m	1500m	2000m	Qual. Code	
<b>1</b>	<b>3</b>	<b>GER2</b>	(b) <b>NARUHN Philipp</b> (s) <b>EICHNER Florian</b>	1:37.21 (2) 0.64	3:18.69 (1) 1:41.48 (1)	5:02.81 (1) 1:44.12 (1)	<b>6:50.27</b> <b>1:47.46 (1)</b>	SAB	
<b>2</b>	<b>4</b>	<b>AUS</b>	(b) <b>COUDRAYE Bryn</b> (s) <b>GRIMM Dominic</b>	1:36.57 (1)	3:21.57 (2) 1:45.00 (2) 2.88	5:07.11 (2) 1:45.54 (2) 4.30	<b>6:56.55</b> <b>1:49.44 (2)</b> <b>6.28</b>	FC	



# Some photo finish examples



# Photo Finish

## Example A



# Photo Finish

## Example B



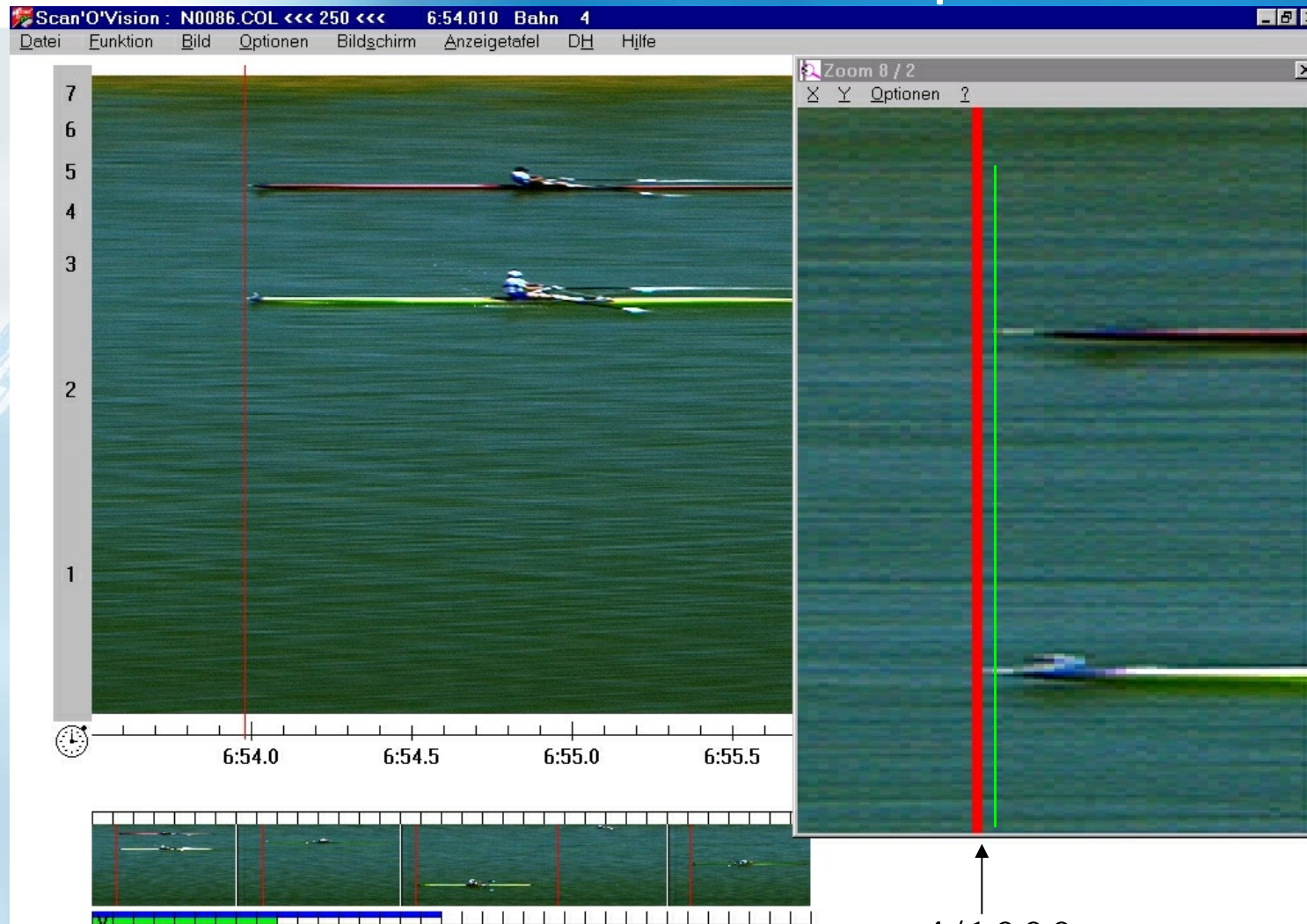
Comment: not good ! What will happen when a bow ball is behind a rower....

Reason: camera is too low!



# Photo Finish

## Example C





# Photo Finish

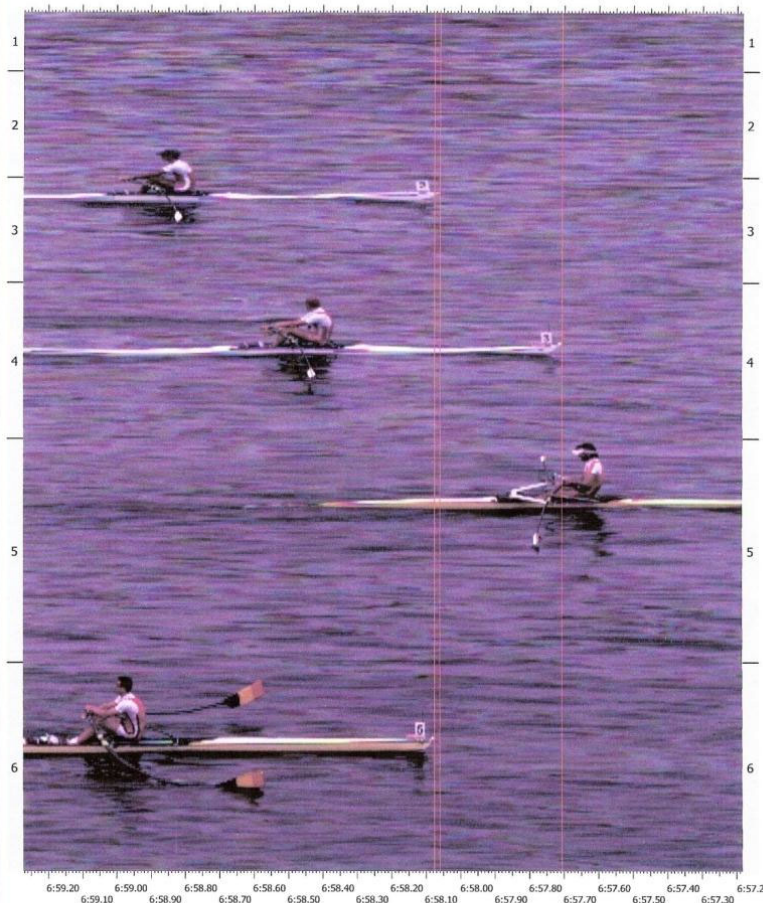
## Example D

21.06.2008 11:03:11

Poznan\_2008 - LM1x SA/B 1 (50-1-1)

Ziel - Main

Start: 21.06.2008 10:47:58.46



Copyright (c) 1991-2008 Lynx System Developers, Inc.

RWC III Poznan, Poland

20 - 22 June 2008

18

RESULTS

LM1x

(Event)

Men's Lightweight Single Sculls - Semifinal A/B 1

SA/B 1

SAT 21 JUN 2008

Race 50

World Best Time: GBR PURCHASE Zac Eton (GBR) 2006 6:47.82  
World Champion: NZL GRANT Duncan Munich (GER) 2007 World Champ'ships 6:53.89

Rank	Lane	NOC Code	Pos	Name	500m	1000m	1500m	2000m	Qual. Code
1	4	NED	(b)	SCHOUTEN Jaap	1:41.40 (1)	3:24.90 (1)	5:10.58 (1)	6:56.91 (1)	FA
					1:43.50 (1)	1:45.68 (2)	1:46.33 (4)		
2	3	DEN	(b)	JOERGENSEN Morten	1:42.75 (3)	3:27.23 (2)	5:15.06 (4)	6:57.71 (1)	FA
					1:44.48 (2)	1:47.83 (4)	1:42.65 (1)		
					1.35	2.33	4.48	0.80	
3	2	JPN	(b)	SUDA Takahiro	1:43.90 (5)	3:29.56 (5)	5:13.73 (3)	6:58.07 (2)	FA
					1:45.66 (4)	1:44.17 (1)	1:44.34 (2)		
					2.50	4.66	3.15	1.16	
4	5	BEL	(b)	VAN DER FRAENEN Wouter	1:42.05 (2)	3:27.44 (3)	5:13.28 (2)	6:58.08 (3)	FB
					1:45.39 (3)	1:45.84 (3)	1:44.80 (3)		
					0.65	2.54	2.70	1.17	
5	6	ITA1	(b)	SANCASSANI Franco	1:43.23 (4)	3:29.21 (4)	5:17.44 (5)	7:06.40 (5)	FB
					1:45.98 (6)	1:48.23 (6)	1:48.96 (5)		
					1.83	4.31	6.86	9.49	
6	1	VEN	(b)	GUIPE Jose	1:44.71 (6)	3:30.42 (6)	5:18.39 (6)	7:11.67 (6)	FB
					1:45.71 (5)	1:47.97 (5)	1:53.28 (6)		
					3.31	5.52	7.81	14.76	

Qualification Rules: 1-3 to Final A, Remainder to Final B (1-3->FA, 4...->FB)

Note: Boats not moving on to the next round of races shall be ranked last in the overall event placing.

Legend:

(b) bow

INTERNET Service: [www.worldrowing.com](http://www.worldrowing.com)

FISA Data Service

Page 1 / 1

data processing by SWISS TIMING

Report Created SAT 21 JUN 2008 / 10:56

# Photo Finish

## Example E

Rang	Ba	Land / Verein	Zeit
1.	3	AUS	6:01.23
2.	4	GER	6:01.51
3.	1	FRA	6:01.66
4.	2	ITA	6:01.77
5.	5	BLR	6:01.84
6.	6	GBR	6:13.59



Back up : helps some times...



JM4x FB

Main Photo Finish  
White bow ball on reflection of sun





JM4x FB

Zoom 2 / 2 Glanz

X Y Optionen ?

Back up system

Visible

# Dead Heat Problem





WHAT IS THE DIFFERENCE BETWEEN THESE TWO RESULTS ?

RANK	LANE	NATION	TIME	
1	3	ITA	6:48.15	
2	5	LAT	6:52.16	+ 4.01
3	1	CRO	6:52.16	+ 4.01
4	4	AUT	6:56.32	+ 8.17
5	2	GBR	7:04.71	+ 16.56
6	6	RUS	7:07.75	+ 19.70

RANK	LANE	NATION	TIME	
1	3	ITA	6:48.15	
2	5	LAT	6:52.16	+ 4.01
2	1	CRO	6:52.16	+ 4.01
4	4	AUT	6:56.32	+ 8.17
5	2	GBR	7:04.71	+ 16.56
6	6	RUS	7:07.75	+ 19.70

RANK	LANE	NATION	TIME	
1	3	ITA	6:48.15	
2	5	LAT	6:52.16	+ 4.01
3	1	CRO	6:52.16	+ 4.01
4	4	AUT	6:56.32	+ 8.17
5	2	GBR	7:04.71	+ 16.56
6	6	RUS	7:07.75	+ 19.70

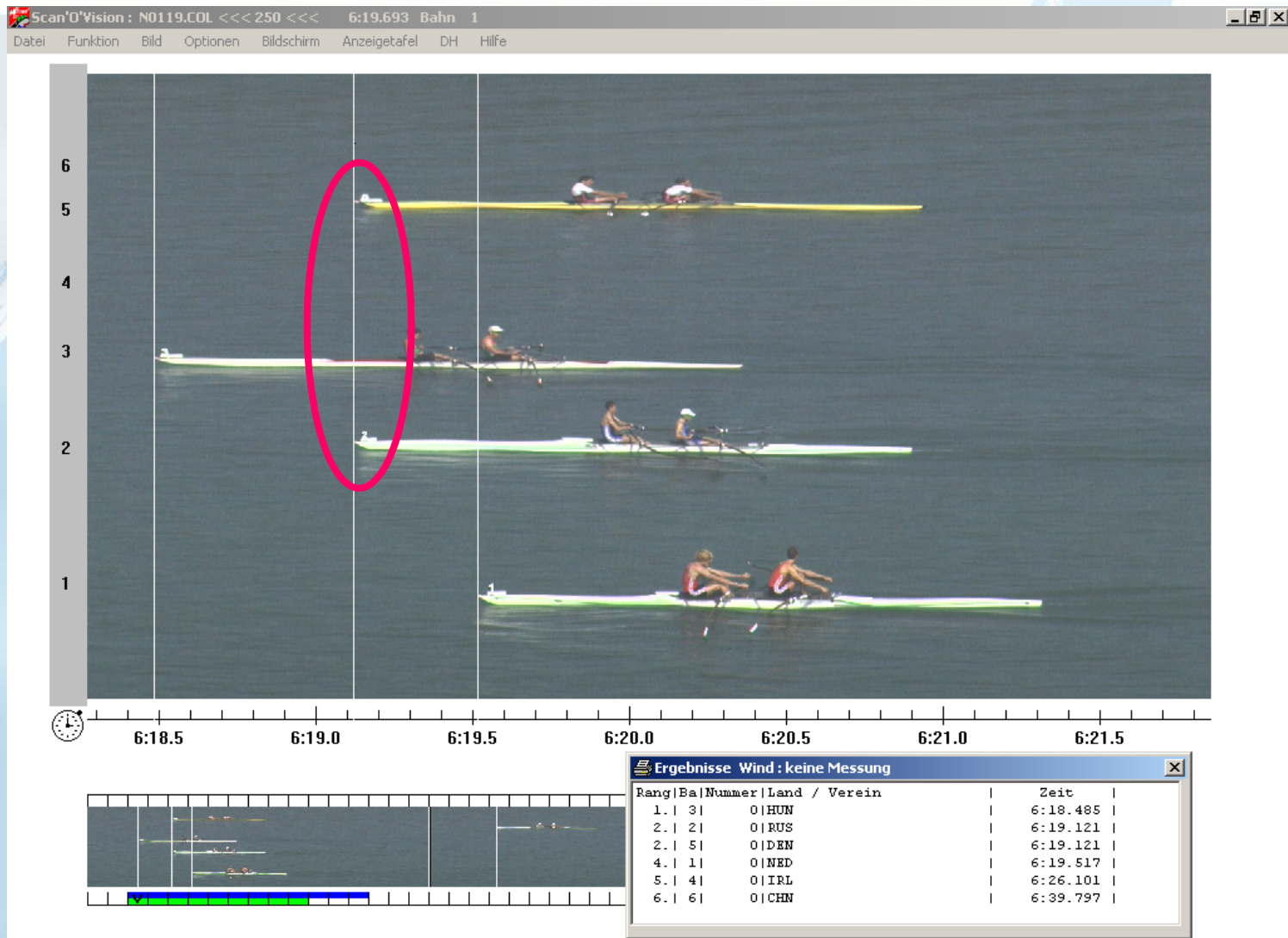
RANK	LANE	NATION	TIME	
1	3	ITA	6:48.15	
2	5	LAT	6:52.16	+ 4.01
2	1	CRO	6:52.16	+ 4.01
4	4	AUT	6:56.32	+ 8.17
5	2	GBR	7:04.71	+ 16.56
6	6	RUS	7:07.75	+ 19.70

RANK	LANE	NATION	TIME	
1	3	ITA	6:48.15	
2	5	LAT	6.52.162	+ 4.01
3	1	CRO	6.52.167	+ 4.01
4	4	AUT	6:56.32	+ 8.17
5	2	GBR	7.04.71	+ 16.56
6	6	RUS	7.07.75	+ 19.70

RANK	LANE	NATION	TIME	
1	3	ITA	6:48.15	
2	5	LAT	6.52.162	+ 4.01
2	1	CRO	6.52.162	+ 4.01
4	4	AUT	6:56.32	+ 8.17
5	2	GBR	7.04.71	+ 16.56
6	6	RUS	7.07.75	+ 19.70

IF WE CAN SEE A DIFFERENCE WE MUST GIVE A RANKING  
EVEN IF THE RESULTS ARE IN THE SAME HUNDREDTH OF SECOND.  
IF NOT THERE IS A DEAD HEAT

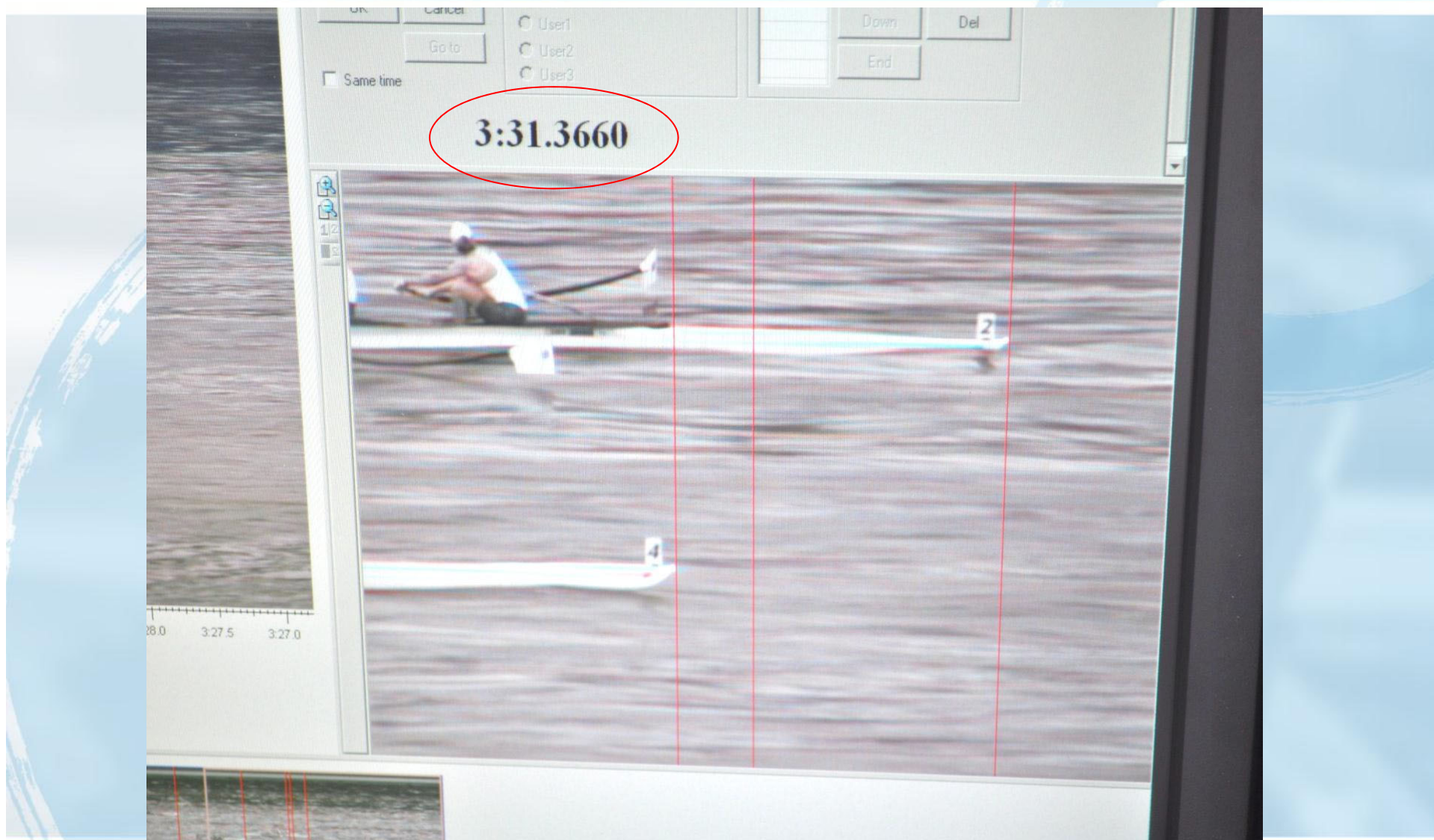






2007 Munich : LW2X FA Dead heat for bronze medal

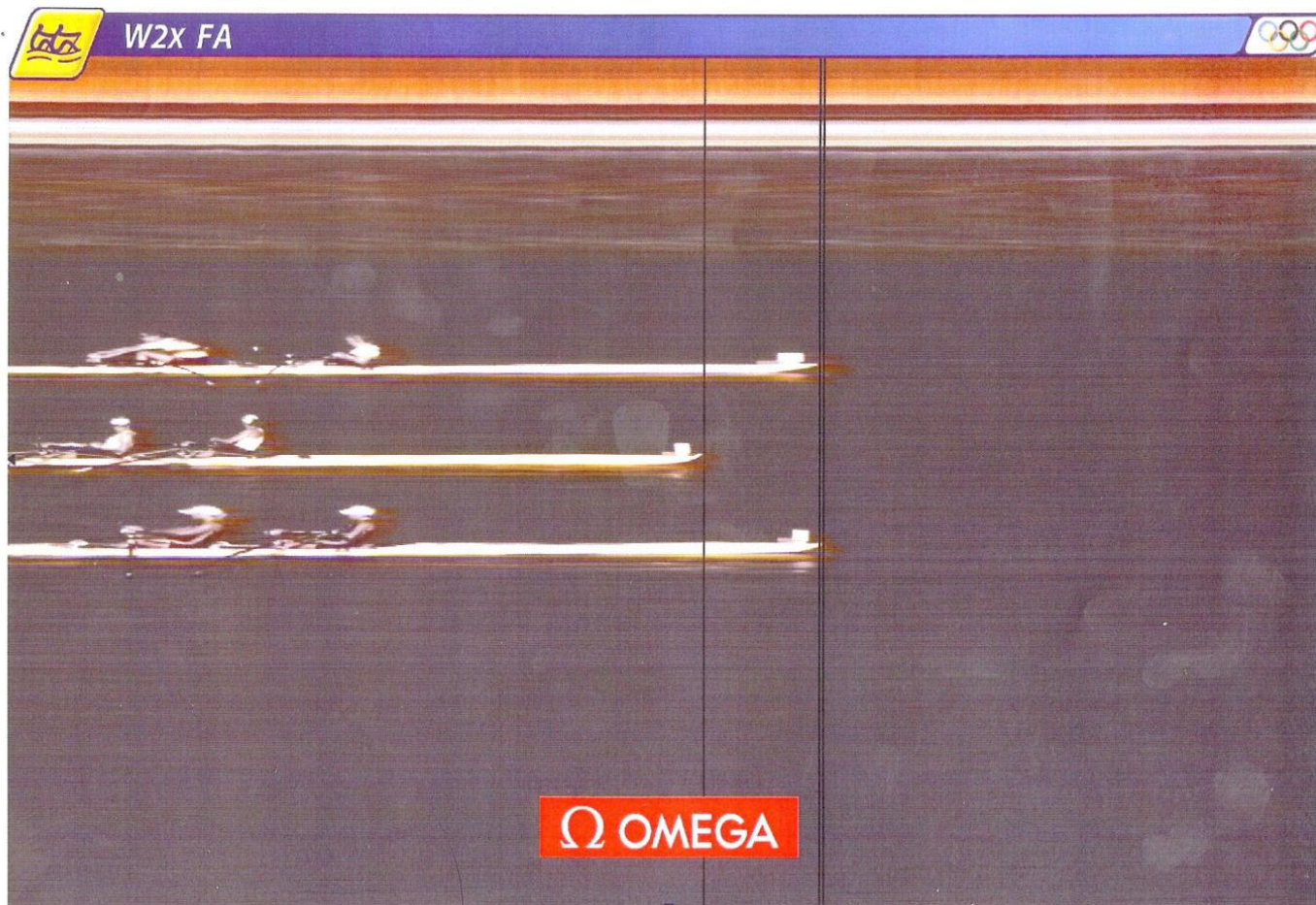










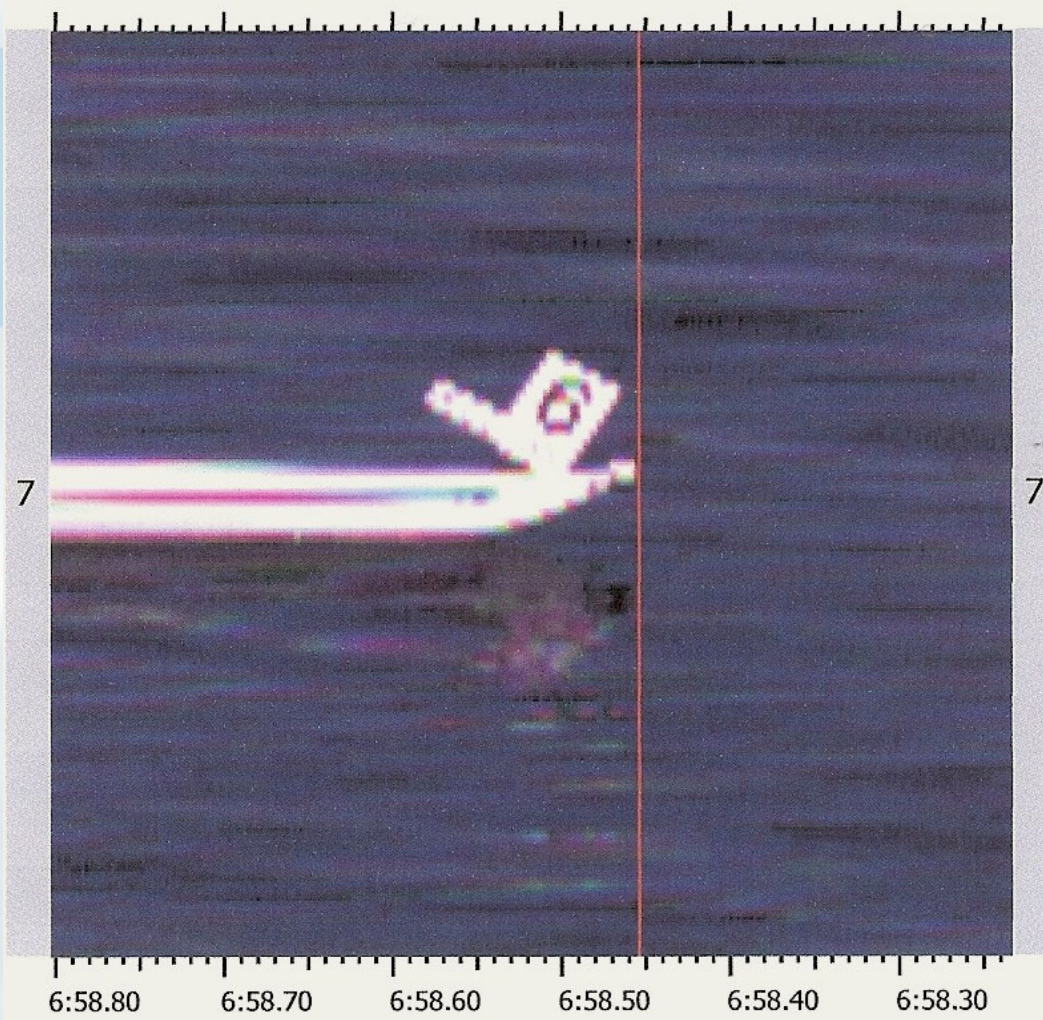




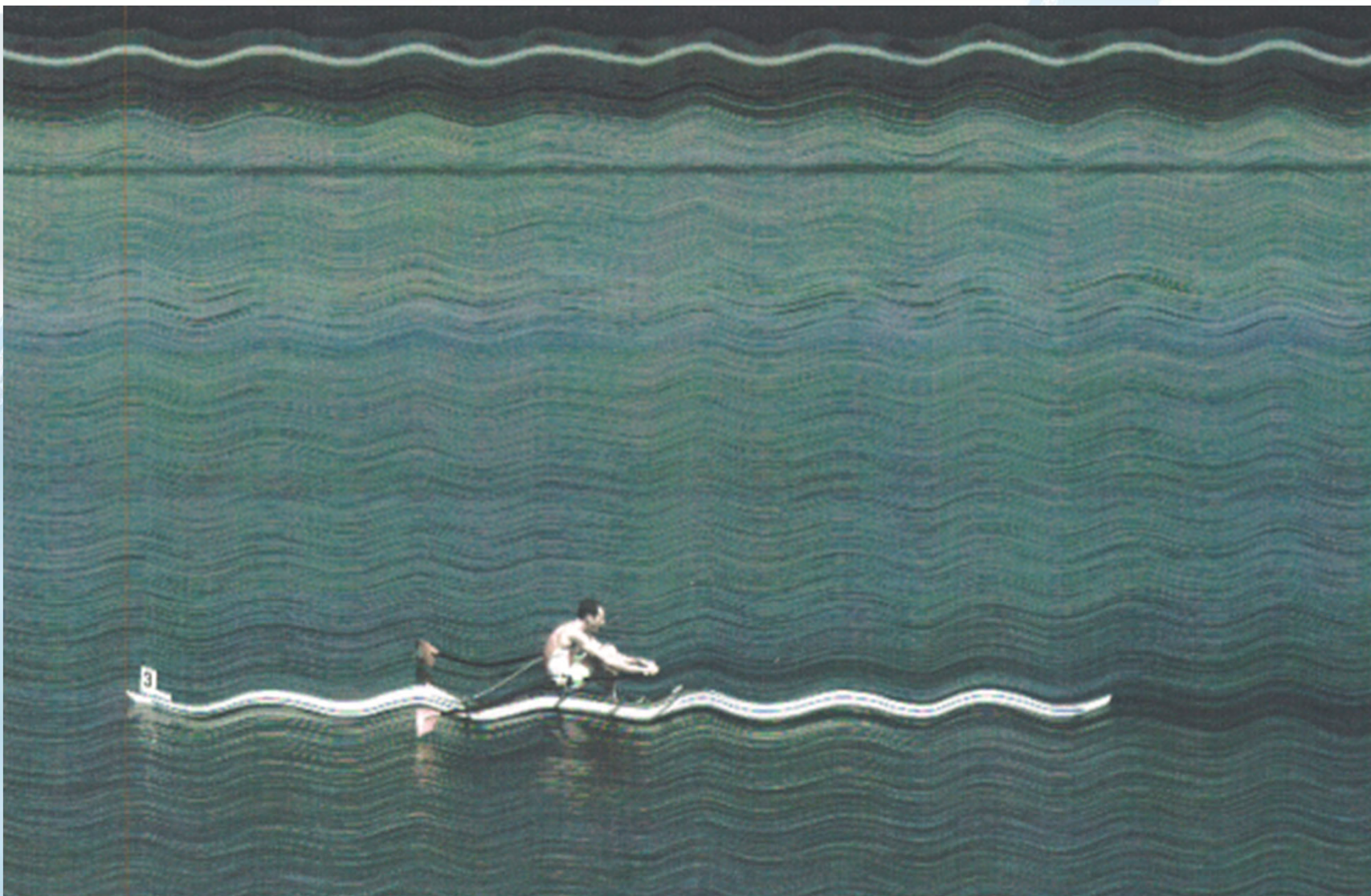
**Poznan\_2008 - M2- FA (98-1-1)**

**Ziel - Main**

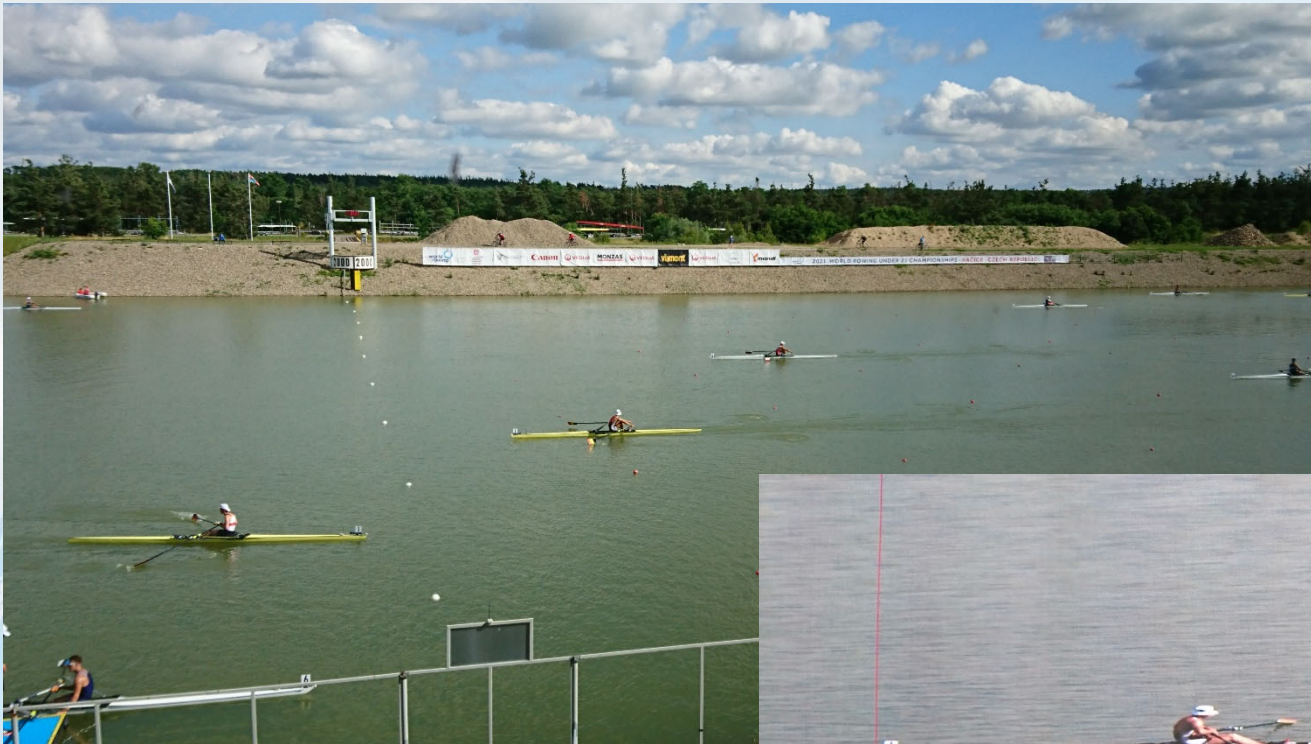
**Start: 22.06.2008 11:18:00.49**











WRC III Lucerne, Switzerland

08 - 10 July 2011

8

(Event)

## RESULTS

LW2x

### Lightweight Women's Double Sculls

H2

FRI 8 JUL 2011

Race 39

World Best Time:	CHN	XU / YAN	Poznan, 2006 (POL) 2006	6:49.77
World Champion:	CAN	JENNERICH / CAMERON	Karapiro, New Zealand (NZL) 2010 World Champ'ships	8:06.20

Rank	Lane	NOC Code	Name	500m	1000m	1500m	2000m	Prog. Code	
1	6	ITA2	(b) MILANI Laura (s) MARASCA Enrica	1:45.48 (2)	3:32.39 1:46.91	5:18.50 1:46.11	7:05.96 1:47.46	SA/B	
				1.34	0.02				
2	1	AUS	(b) McNAMARA Alice (s) EVERY-HALL Hannah	1:44.14 (1)	3:32.37 1:48.23	5:21.01 1:48.64	7:07.24 1:46.23	R	
						2.51	1.28		
3	4	ITA1	(b) POLLINI Giulia (s) BELLO Erika	1:45.55 (3)	3:34.87 1:49.32	5:25.10 1:50.23	7:13.34 1:48.24	R	
				1.41	2.50	6.60	7.38		
4	5	GER	(b) DRAEGER Marie-Louise (s) NOSKE Anja	DNA	DNA	DNA	7:19.00	R	
							13.04		
5	3	POL	(b) KEMNITZ Magdalena (s) RENC Agnieszka	1:47.33	3:41.88 1:54.55	5:39.35 1:57.47	7:37.39 1:58.04	R	
				3.19	9.51	20.85	31.43		
6	2	NOR	(b) GUDEM Hilde (s) SKAARNAES-MOLDESTAD Anna	1:52.87	3:54.99 2:02.12	5:55.15 2:00.16	7:54.93 1:59.78	R	
				8.73	22.62	36.65	48.97		

Progression System: 1 to Semifinal A/B, Remainder to Repechage (1->SA/B, 2...->R)



What happens if you do not have  
a Photo Finish electronic timing  
system?

# No Photo Finish System

If there is no Photo Finish system then more officials maybe needed in the finish tower.

**The ORDER OF FINISH is the most important thing!**

There should be some camera on the finish line that can capture the finish line, even if it is a high definition video camera.

But there may also be one of more officials assigned to watch and record the finish order

# No Photo Finish System

## Timing of the Race

### Option 1 – Open radio start

- A radio is held by the starter and the start commands are broadcast over the radio
- Finish line official(s) start a watch when the start commands are given and record the times as the crews finish the race.



# No Photo Finish System

## Timing of the Race

Option 2 – Race Umpire keeps the time of the winning crew

- The Race Umpire starts a watch when the Starter gives the start commands
- The Race Umpire stops the watch when the first crew crosses the finish line – requires a visual signal when the crew crosses (usually a flag person on the finish line)

# No Photo Finish System

## Timing of the Race

Option 2 – Race Umpire keeps the time of the winning crew

- The Finish Officials record the “split times” between each of the crews which are added to the winning time to get each crew’s respective time.

**Thank You!**